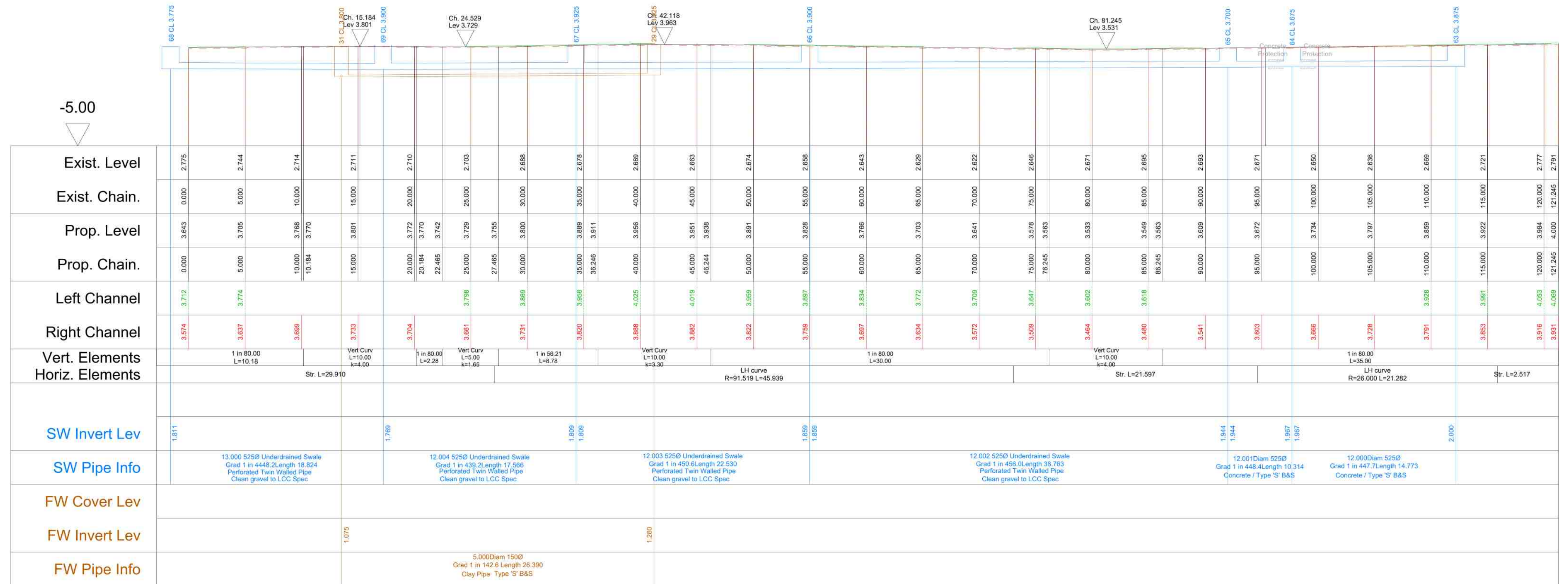
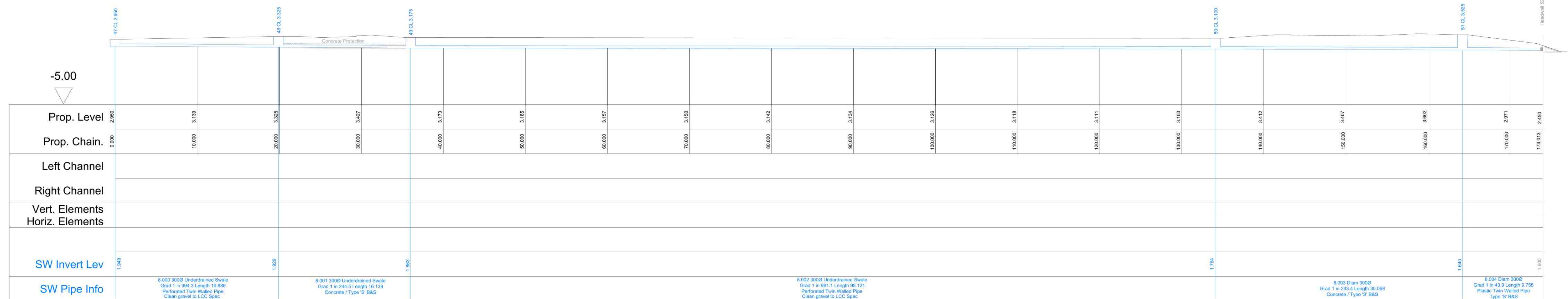


Road6

Horiz. 1:250 Vert. 1:250





Road10



MHS47 to Headwall 52
Horiz. 1:250 Vert. 1:250

J	H	09.03.22	ATF	Channel levels added to long sections	JmKc
F	G	22.04.21	ATF	Sections amended to show latest FW drainage	JmKc
F	G	05.05.20	JH	Horizontal data added to sections	JmKc
E	D	10/01/20	CMN	Updated for S104/S38 applications	JmKc
D	C	18/09/19	CMN	SW and FW changed to plastic	JmKc
C	B	18/10/19	CMN	SW drainage gradients reviewed	JmKc
B	A	12/07/19	CMN	Updated to clients comments	JmKc
A	REV	10/04	CMN	Updated to submit for S38/S104 application	JmKc
REV	DATE	BY	DETAILS		CHKD
A1	AMENDMENTS				

NOTES

TITLE			PROJECT			CLIENT		
S104/ S38 Longitudinal Sections Sheet 5			Middlegate Road, Kirton					
DATE	CHECKED	APPROVED BY	SCALE	DRAWN	ENGINEER	DRAWING No:	DRAWING STATUS	
17/01/20	JMcK	JMcK	1:250 @A1	CMN	CMN	MA10953-204-5 J	PRELIMINARY	
								
						t: 0115 941 4560 no.1 main hill, nottingham ng1 1jq e: info@millward.co.uk w: www.millward.co.uk		