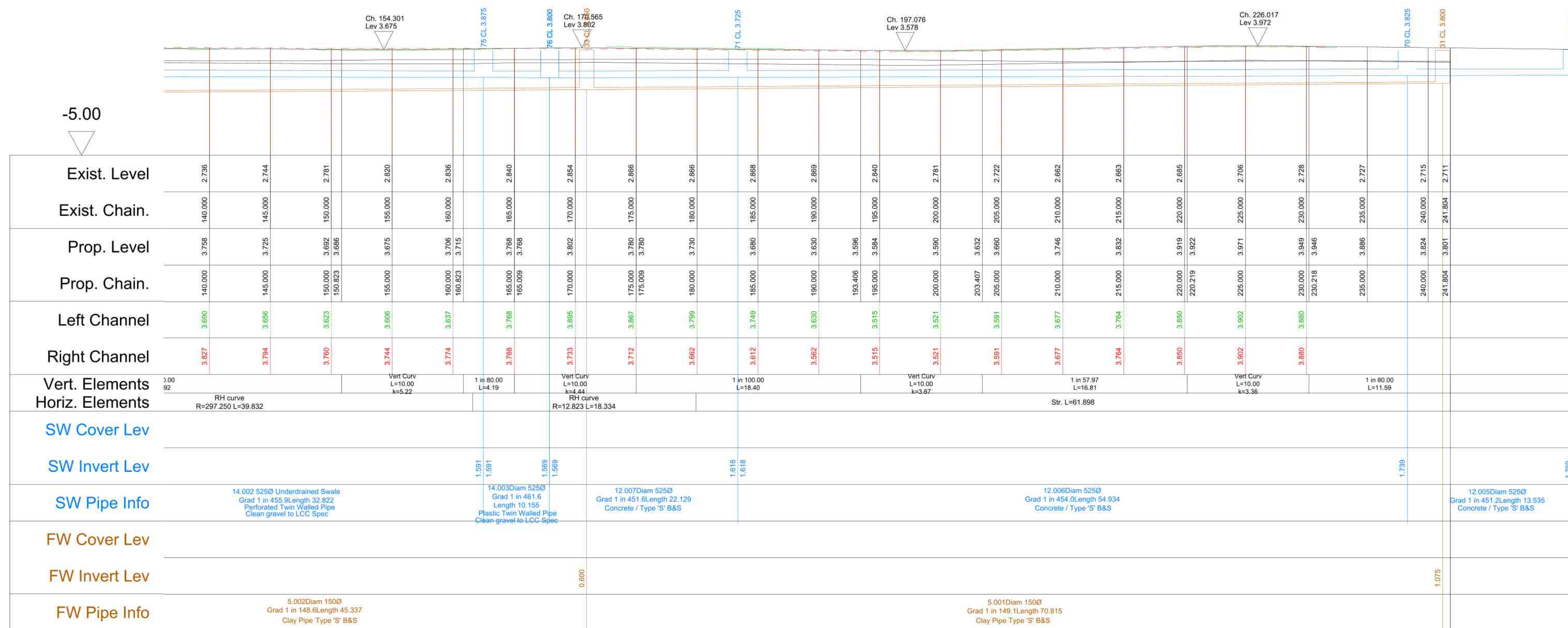


# Road9

Horiz. 1:250    Vert. 1:250



|     |            |     |                                             |      |
|-----|------------|-----|---------------------------------------------|------|
| J   | 05.06.21   | ATF | Channel levels added to long sections       | JMcK |
| H   | 19.03.22   | BC  | FW FHMs F25, F26, F35 & F36 CLS amended.    | JMcK |
| G   | 22.04.21   | ATF | Horizontal data added, Road 9 amended       | JMcK |
| F   | 05.05.20   | JH  | Revised in accordance with AW comments      |      |
| E   | 16/01/20   | CMN | Updated for S104/S38 applications           | JMcK |
| D   | 06/11/19   | CMN | SW and FW changed to plastic                | JMcK |
| C   | 16/10/19   | CMN | SW drainage gradients reviewed              | JMcK |
| B   | 12/07/19   | CMN | Updated to clients comments                 | JMcK |
| A   | 10/04      | CMN | Updated to submit for S38/S104 application. | JMcK |
| REV | DATE       | BY  | DETAILS                                     | CHKD |
| A1  | AMENDMENTS |     |                                             |      |

NOTES

|       |                                               |
|-------|-----------------------------------------------|
| TITLE | S104/ S38<br>Longitudinal Sections<br>Sheet 4 |
|-------|-----------------------------------------------|

|          |         |             |
|----------|---------|-------------|
| DATE     | CHECKED | APPROVED BY |
| 17/01/20 | JMcK    | JMcK        |

PROJECT

Middlegate Road,  
Kirton

|           |       |          |
|-----------|-------|----------|
| SCALE     | DRAWN | ENGINEER |
| 1:250 @A1 | CMN   | C        |

|        |  |
|--------|--|
| CLIENT |  |
|--------|--|



DRAWING No: MA10953-204-4 J

|                |             |
|----------------|-------------|
| DRAWING STATUS | PRELIMINARY |
|----------------|-------------|



t: 0115 941 4560  
no.1 malin hill, nottingham ng1 1jq  
e: info@millward.co.uk w: www.millward.co.uk

