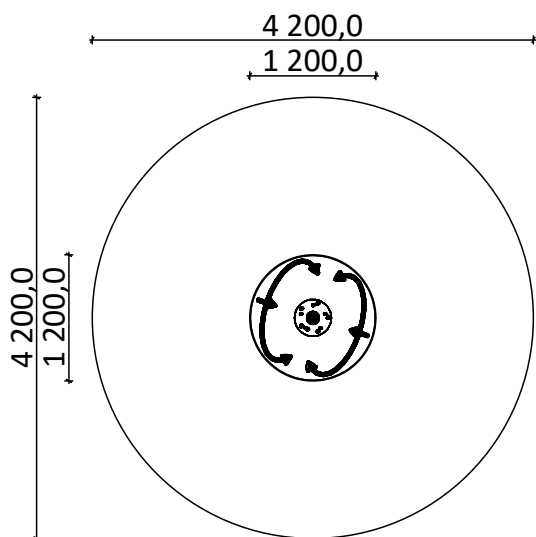
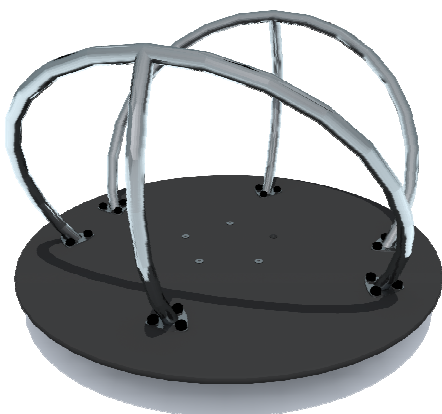


Construction is made from glued wood, stainless and galvanized steel metal, rope and HPL laminate.



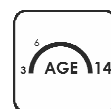
Length: 1 200 mm
Width: 1 200 mm
Height: 750 mm

Length of safety area: 4 200 mm
Width of safety area: 4 200 mm
Required safety area: 16 m²

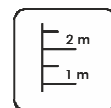
(Install shock absorbing material according to EN 1176:2017)



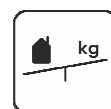
2
children



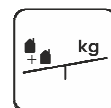
from 3
age



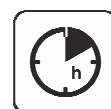
0,10 m
height of fall



... kg
(heaviest part)



... kg

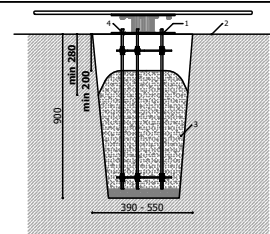


....
(without excavation and
concreting)

Playground equipment steel foundation is concreted in the ground at the planned location. Foundation should be accessible for maintenance. The equipment can be used after two days when the concrete becomes solid. During assembly no children are allowed in the area.

Equipment safety checkings must be performed once in a week in high vandalism risk area.

Maintenance is required once in every 3 months, depending on usage.



0,750

0,130

0,000

Transportation:

1 (one) palette:
1 200 x 1 200 x 500 mm

Spare parts:

All needed spare parts and elements, when warranty time expires can be ordered in Jūrmalas Mežaparki Ltd., and all the goods will be ready for delivery in 5 working days.

According to EN 1176:2017

Manufactured
according:
07.11.2019.



EN 9100
BUREAU VERITAS
Certification

