

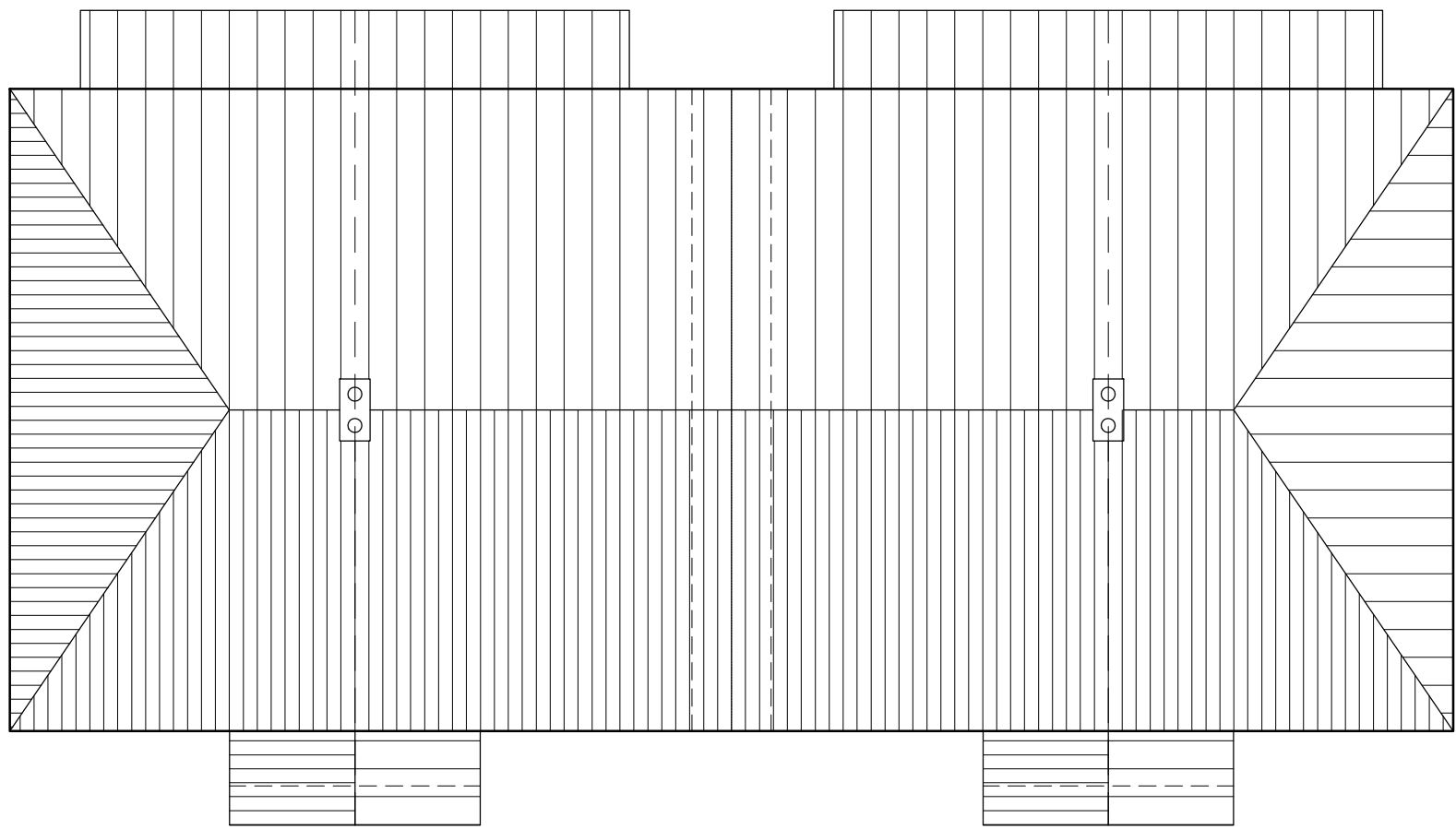
materials

- 1. roofs
- 2. walls
- 3. feature brickwork
- 4. heads
- 5. cills & horiz. banding
- 6. windows/rear doors
- 7. front door
- 8. r.w. goods
- 9. front entrance porch
- 10. rear garden room

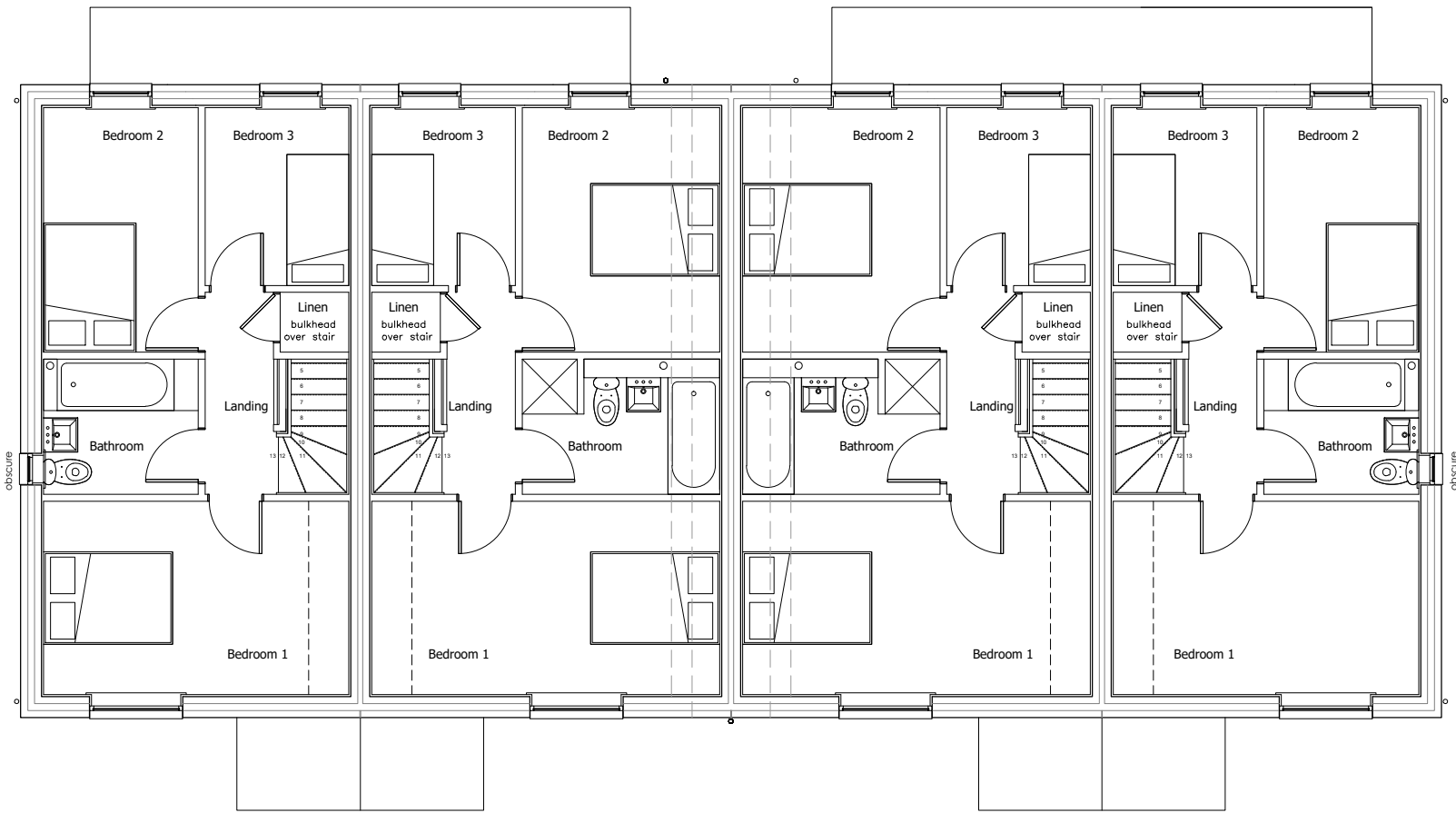
Terracotta Red Pantile
facing brickwork - Red brick tbc
facing brickwork - Red brick tbc
facing brickwork - Red brick tbc
artstone - colour tbc
upvc - colour white
Composite Door - colour tbc
upvc - colour black
Pitch roof bay with exposed timber supports and fascias painted white
with Concrete Plain tile finished to match the main roof colour
Concrete Plain tile finished to match the main roof colour
with brick eaves detail to match main building

Do not scale off this drawing — All dimensions and setting out to be verified on site. If in doubt contact the originator for clarification.
This drawing is the property of FRAMEWORK. Copyright is reserved by them and the drawing is issued on the condition that it is not copied, reproduced, retained or disclosed to any unauthorised person, either wholly or in part without the consent in writing of FRAMEWORK.

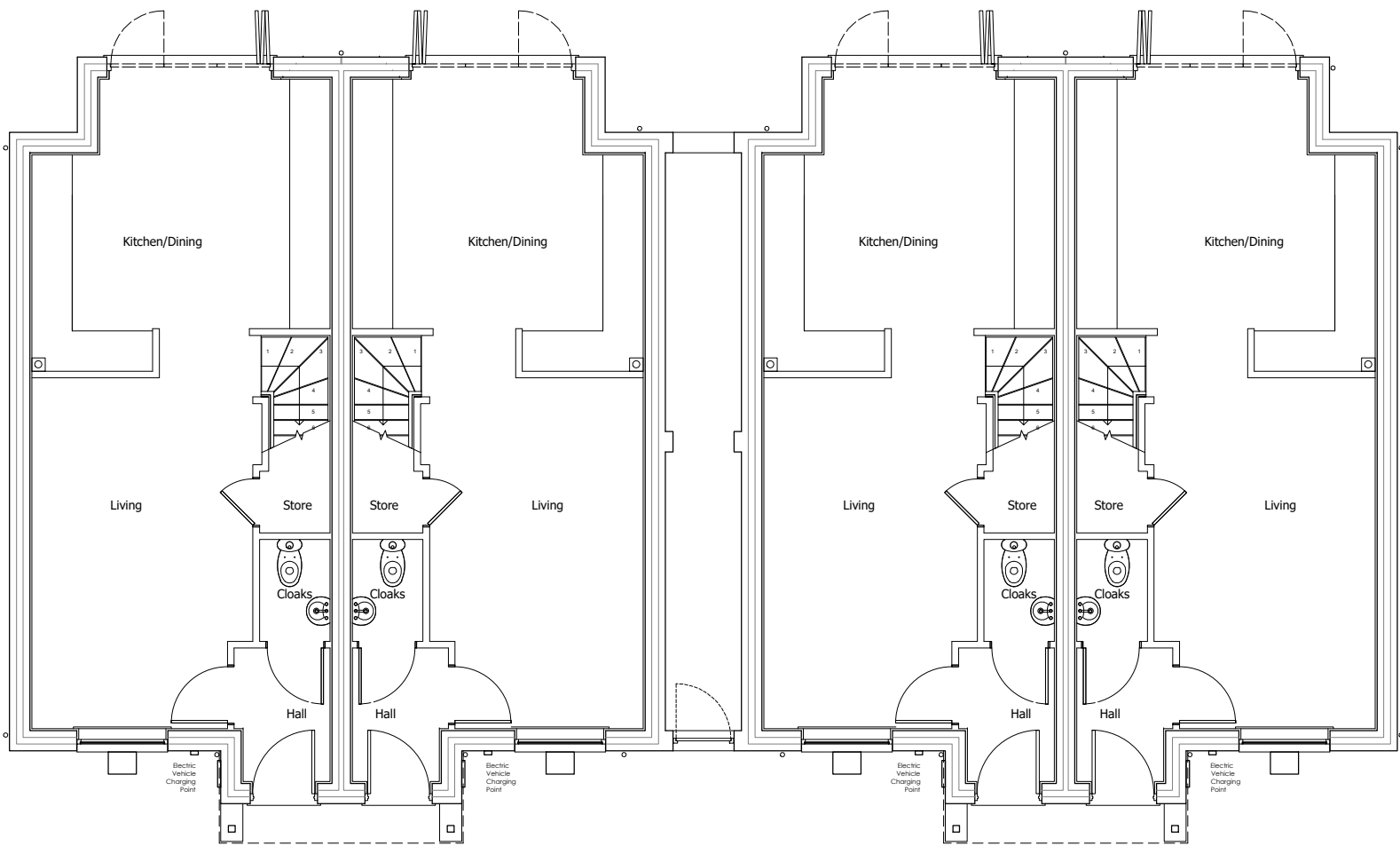
DO NOT SCALE FROM THIS DRAWING. ALL DIMENSIONS / AREAS ARE TO BE CONFIRMED ON SITE. ALL DISCREPANCIES TO BE REPORTED TO THE ARCHITECT.
THIS DRAWING IS SUBJECT TO PLANNING & BUILDING REGULATIONS APPROVAL TO BE READ IN CONJUNCTION WITH STRUCTURAL ENGINEERS / M&E SUB-CONTRACTORS DRAWINGS AND DETAILS



Roof Plan



First Floor Plan



Ground Floor Plan

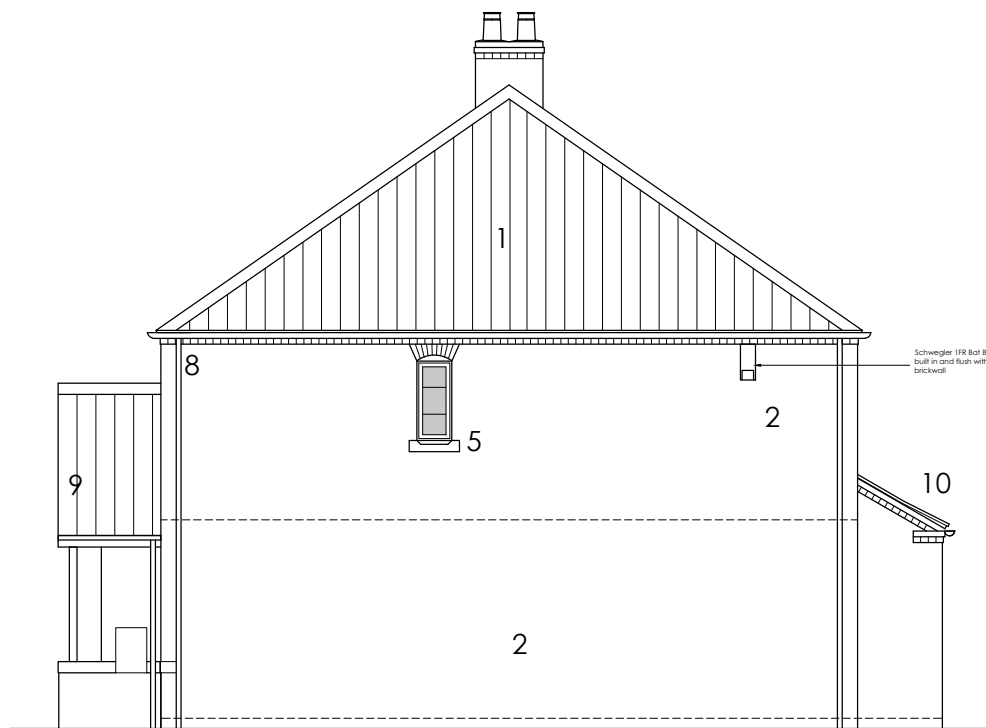
Plots 1-4
PLOTS 1&4 - 3 Bed GIFA 82.57 sq/m (889 sq/ft)
PLOTS 2&3 - 3 Bed GIFA 86.74 sq/m (936 sq/ft)



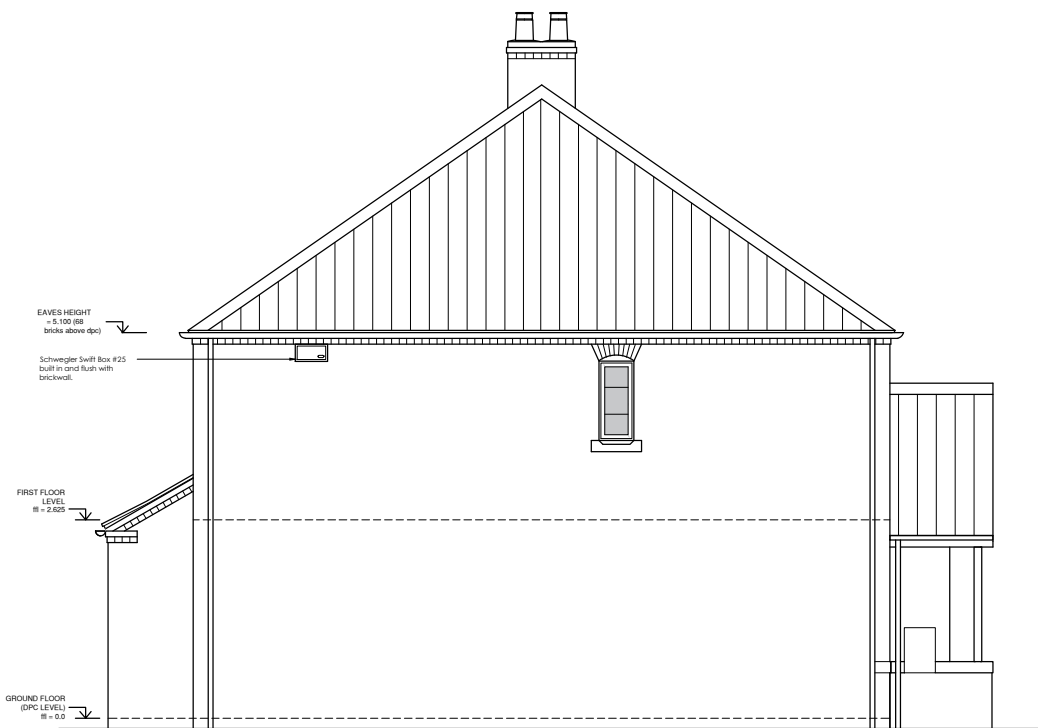
Front Elevation



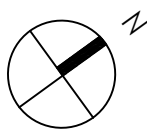
Rear Elevation



Side Elevation



Side Elevation



0 1 2 3 4 5 6 7 8 9 10m
Scale bar 1:100.

A Bird & Bat Boxes added		01.03.2021		PC
Rev	Revision note	Date	Drawn by	
RESIDENTIAL DEVELOPMENT ON LAND TO REAR 13 HIGH STREET, KIRTON FOR JESSOP'S THE BAKERS				
Drawn by	Checked	Date	Scale	
PC		Sept 2020	1:100@A1	
PROPOSED PLANS AND ELEVATIONS		Dwg No	Rev	
		J2018 00150	A	