

Scale bar 1:200.

KEY

ELECTRICAL VEHICLE CHARGING POINTS

E.C.P. - Mode 2 - Electrical Vehicle Charging points located on external wall adjacent to the front entrance of all dwellings.

NEW TREES

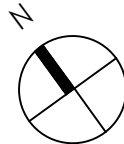
- 2No. PA 12-14 Girth - Wild Cherry - Prunus avium 'Plena'
2No. SA 12-14 Girth - Rowan - Sorbus aucuparia 'Joseph rock'

LOW LEVEL SHRUB PLANTING TO PARKING COURTS

Shrubs shall be planted into a minimum of 450mm good quality fibrous topsoil. Finished beds to be lightly forked over and dressed with 50mm forest bark mulch, and planted with the following native species:

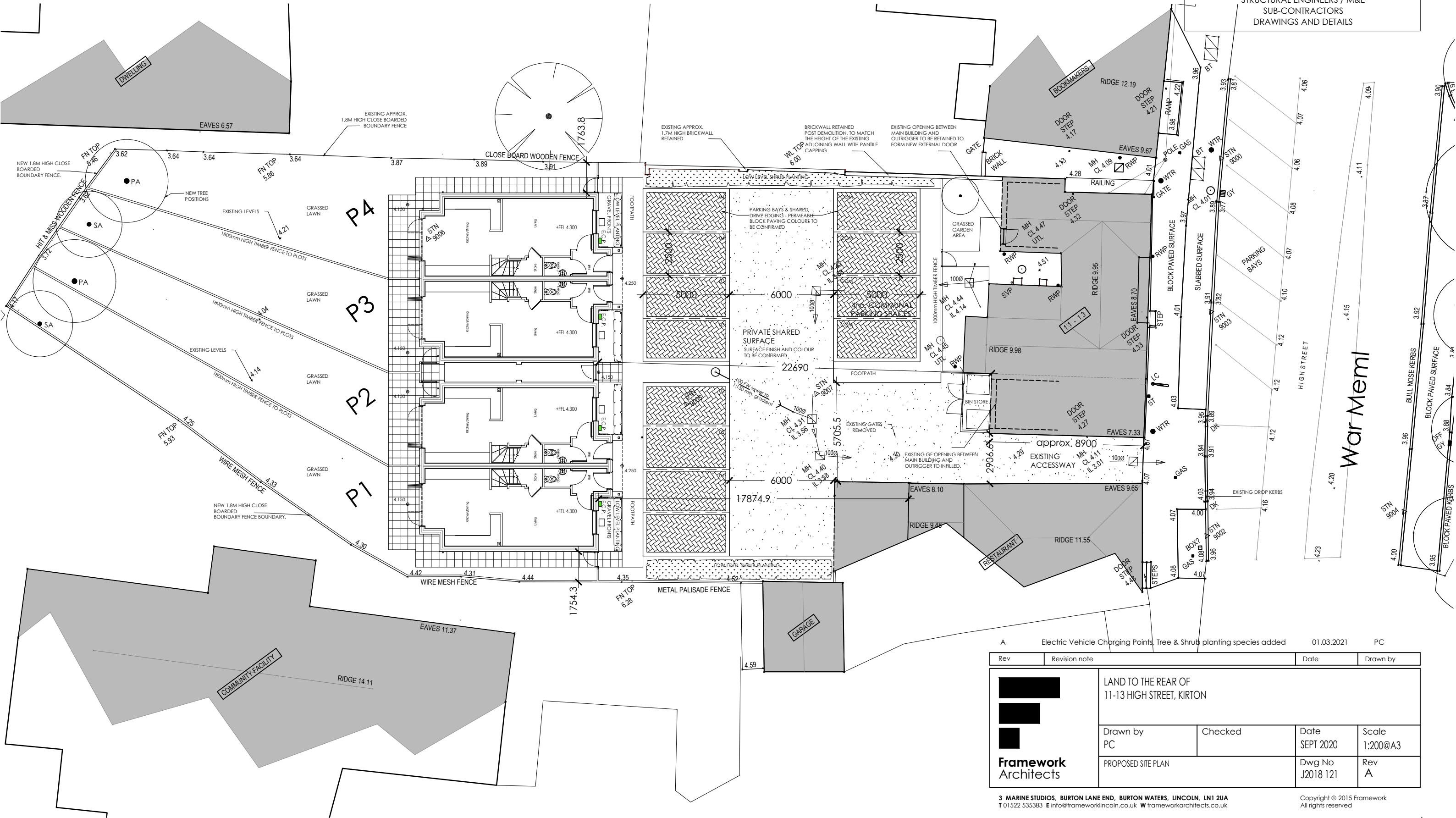
Name	Size	Density
Viburnum tinus	25-40cm	4 per sq m
Hebe albicans	25-40cm	4 per sq m
Potentilla 'Goldfinger'	25-40cm	4 per sq m
Escallonia 'Apple Blossom'	25-40cm	4 per sq m
Lavandula angustifolia 'Hidcote'	25-40cm	4 per sq m

In the long term the shrubs along with the new trees will improve foraging opportunities on site.



Do not scale off this drawing - All dimensions and setting out to be verified on site. If in doubt contact the originator for clarification.
This drawing is the property of FRAMEWORK. Copyright is reserved by them and the drawing is issued on the condition that it is not copied, reproduced, retained or disclosed to any unauthorised person, either wholly or in part without the consent in writing of FRAMEWORK

DO NOT SCALE FROM THIS DRAWING. ALL DIMENSIONS / AREAS ARE TO BE CONFIRMED ON SITE
ALL DISCREPANCIES TO BE REPORTED TO THE ARCHITECT
THIS DRAWING IS SUBJECT TO PLANNING & BUILDING REGULATIONS APPROVAL
TO BE READ IN CONJUNCTION WITH
STRUCTURAL ENGINEERS / M&E
SUB-CONTRACTORS
DRAWINGS AND DETAILS



A Electric Vehicle Charging Points, Tree & Shrub planting species added		01.03.2021	PC
Rev	Revision note	Date	Drawn by
LAND TO THE REAR OF 11-13 HIGH STREET, KIRTON		Drawn by PC	Checked
PROPOSED SITE PLAN		Date SEPT 2020	Scale 1:200@A3
		Dwg No J2018 121	Rev A