

REVISION:	DESCRIPTION:	MADE BY:	DATE:
A	Updated to reflect Historic Building Specialist comments.	MC	07.09.22
B	Updated to reflect conservation officer comments.	MC	02.03.23



New partitions



Line of walls to be demolished



Line of beam or feature above

**A - Staircase in it entirety. Modern boarding to be removed and balustrade to be sensitively refurbished.**

**B - Original Plan Form, mid 18th C original arched niches, cornice and beam location.**

**C - Cornice, beam.**

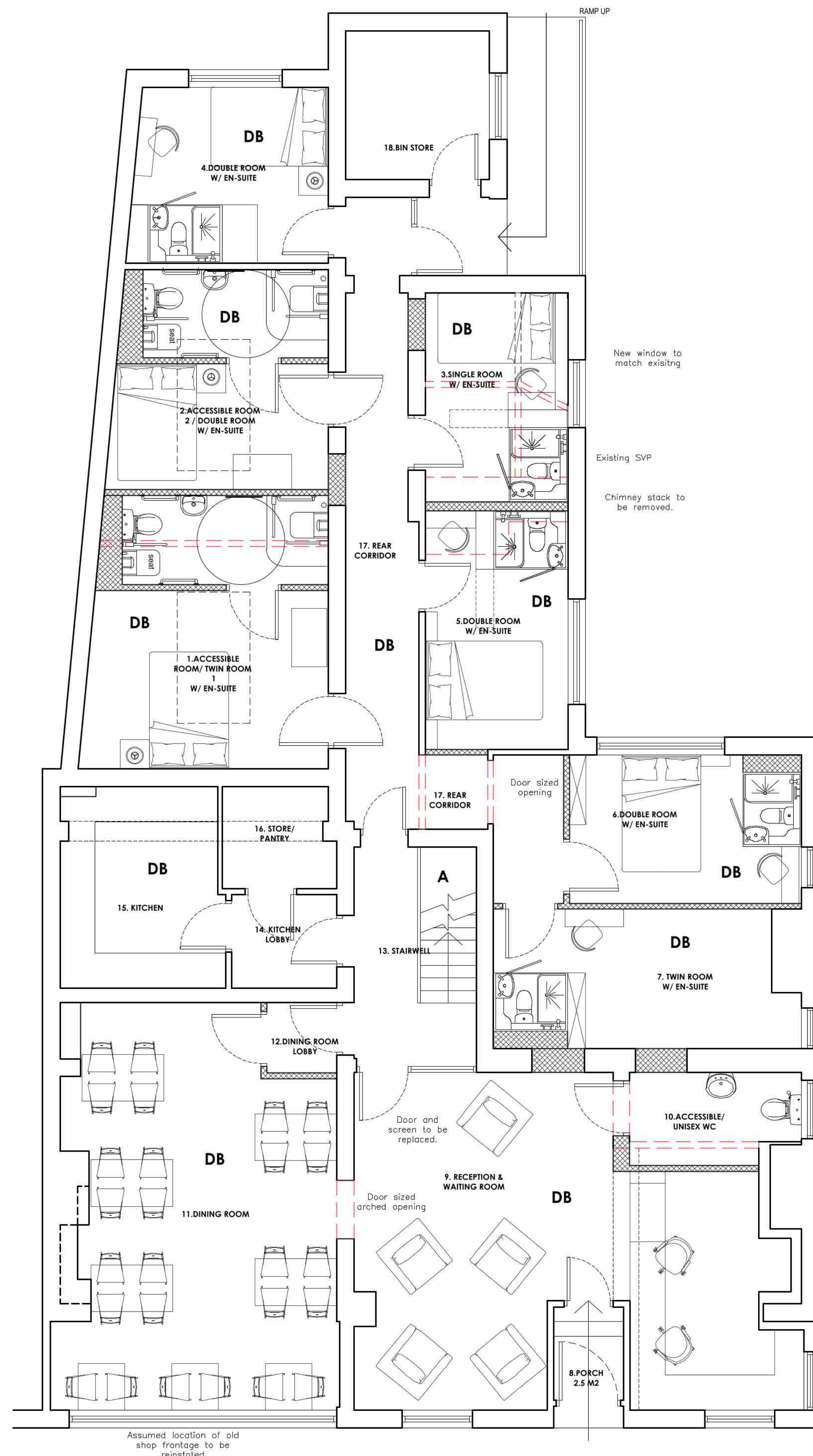
**D - Original square edge skirting, floor board and covered beam.**

**DA - Detail A**  
**DB - Detail B**  
**DC - Detail C**  
**DD - Detail D**  
**DE - Detail E**  
**DF - Detail F**

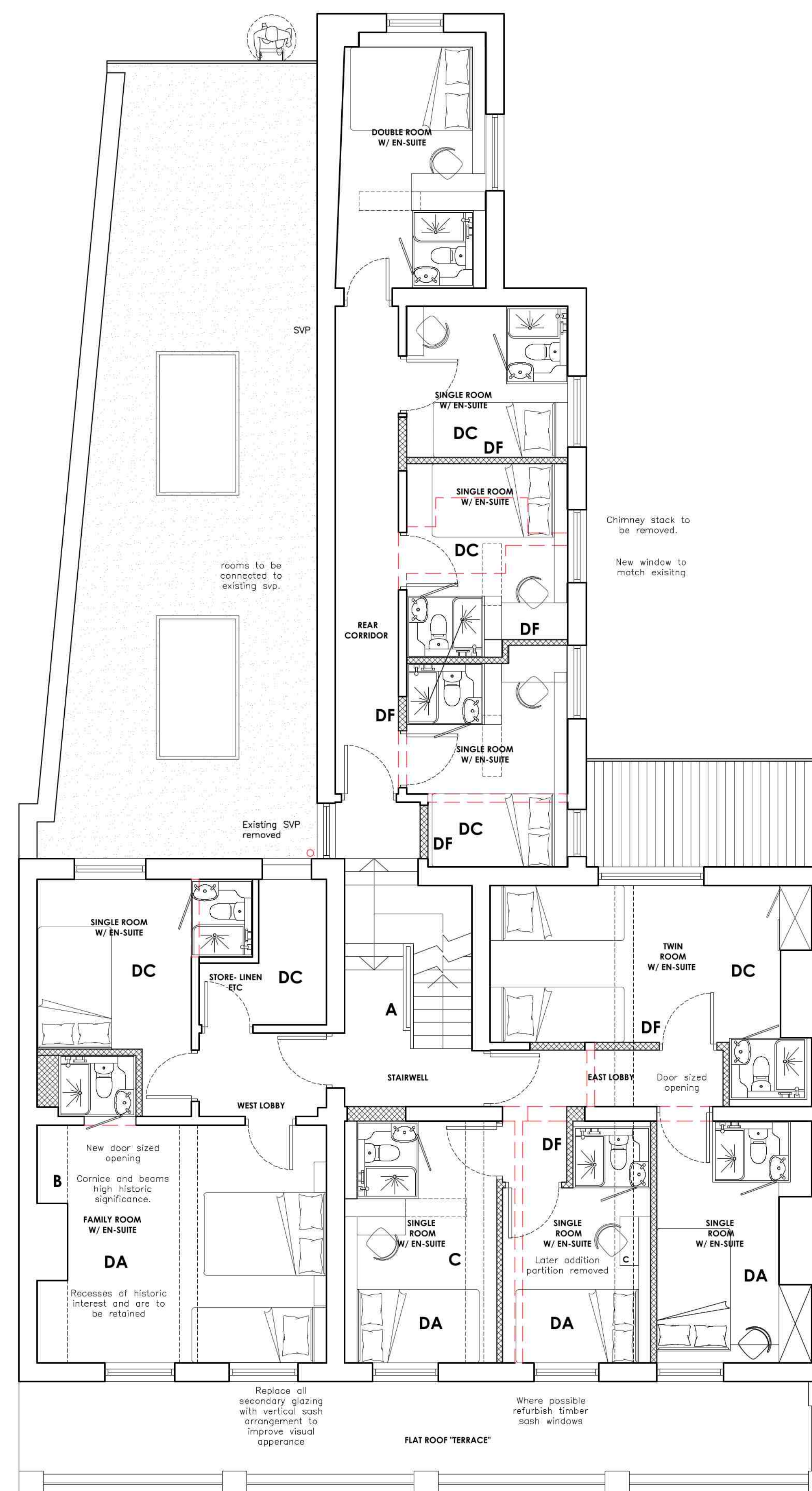
Key:

	Ceiling height
sh:900	Sill height
wh:1200	Window height
dh:2100	Door head height
rwp	Rainwater pipe
SVP	Soil vent pipe
I.C.	Inspection chamber
gu	Gully
	Direction of joist span
	Section tag
LP	Lamp post
gu	Gully
IC	Inspection chamber
MH	Man hole
elec	Electricity services
BT	BT Phone/broadband services

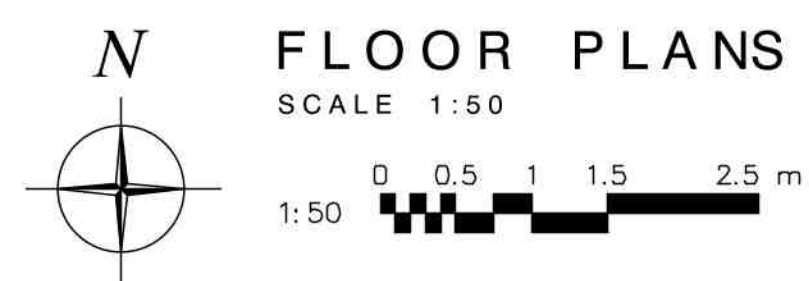
Note: Dimensions to be taken on site. Do not scale.



Ground Floor



First Floor



FLOOR PLANS - AS PROPOSED  
SCALE 1:50

**DOWLMAN**  
Neil Dowman Architecture

Planning | Design | Project Management