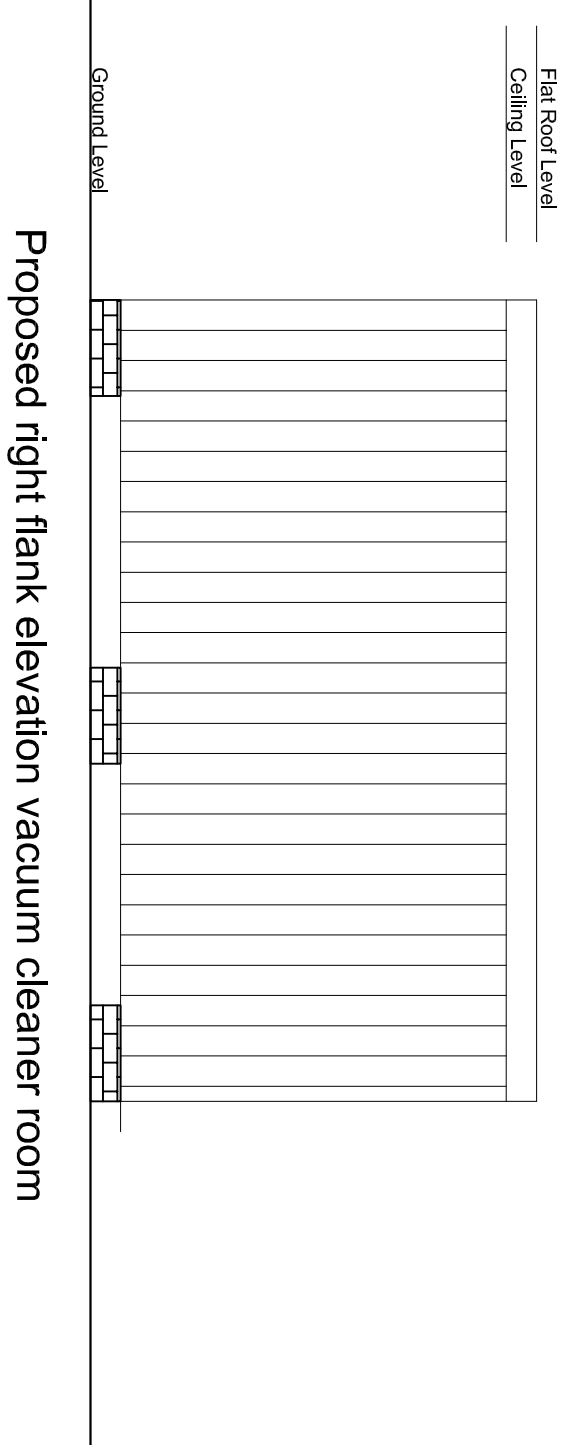
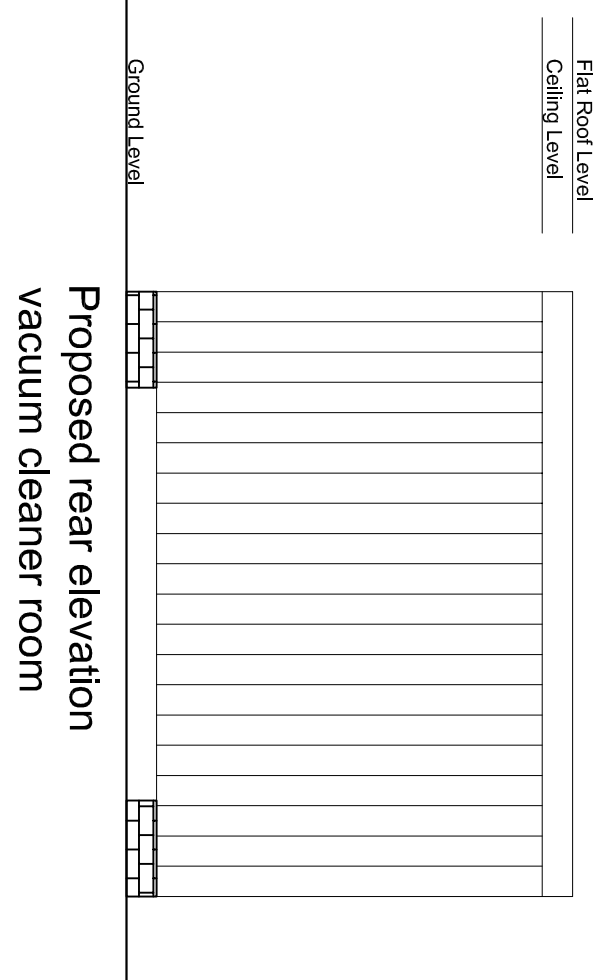
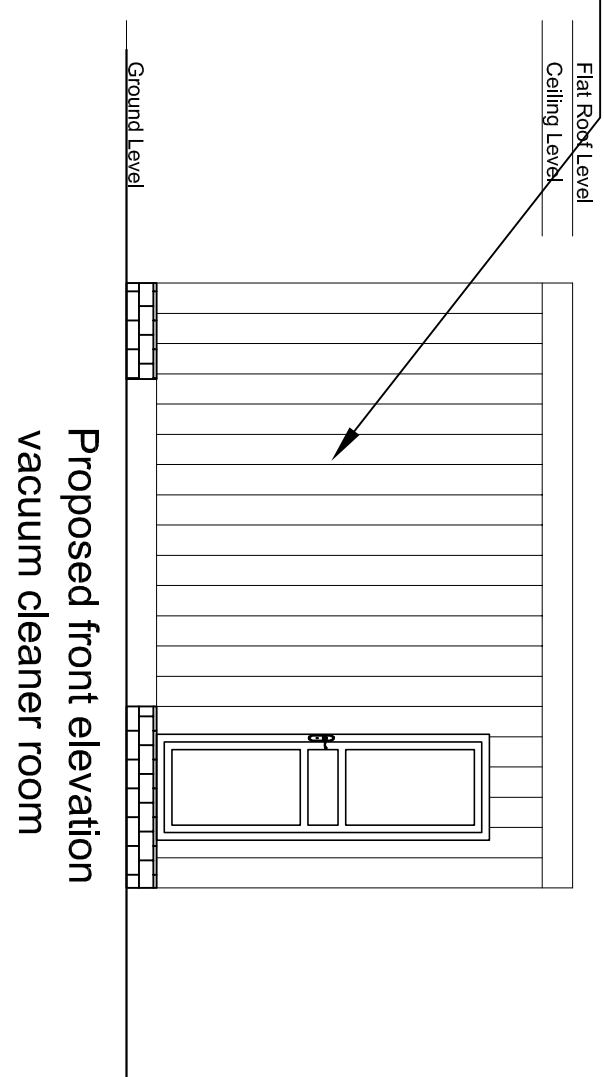
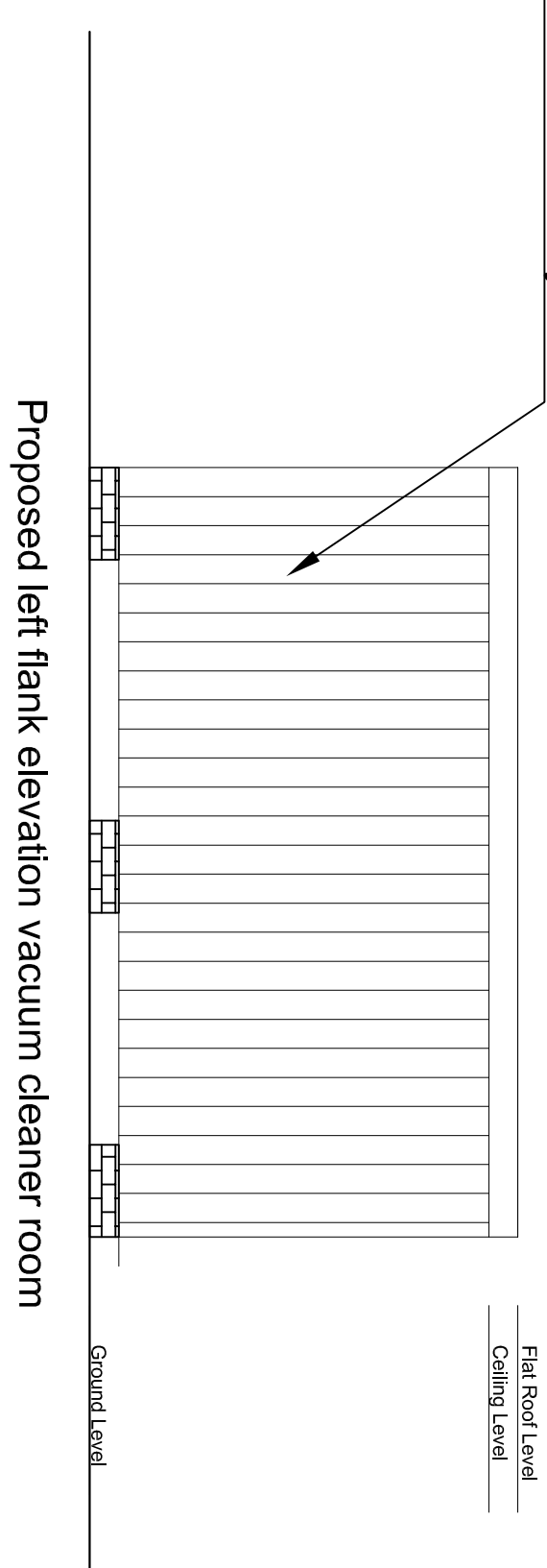


proposed to reduced timber build cabin in heights as requested by Heritage Department Mr. Matthew Bentley we also agreed that all cabins must be build from timber and paint in brown dark color to look like antique so cabins can blend with in nearby area



proposed to reduced timber build cabin in heights as requested by Heritage Department Mr. Matthew Bentley we also agreed that all cabins must be build from timber and paint in brown dark color to look like antique so cabins can blend with in nearby area



central vacuum cleaner
system and water
power jet is installed in
sound proof build room

4000

5300

Central vacuum cleaner system
and water power jet build room

Rev A 3-03-2021 Redirect the entrance and exit at Boston Car Park relocate the staff store

and customers waiting room with sound acoustic timber central cleaning and water power jet room, we proposed to reduce timber build cabins heights as requested by Heritage Department. Mr Matthew Bentley we also agreed that all cabins must be build from timber and paint in brown dark color to look like antique so cabins can blend with in nearby area.

dark color to look like antique so cabins can blend with in nearby area.

SM Design Consultancy Studio

Planning Control
28 / 2 Grosvenor Road, Cloudburst End - London N8 5AL
Tel: 020 3001 7223 mobile 07958 475 219 E-mail: simon@studycg

Rev A	
-------	--

[illegible]

Site:
Boston Car Park
51 A Wide Barnette

101 Riverside Drive
Boston PE21 6SH

--	--

Client: **Mr Serkan Arslan**

<p> 1. Introduction 2. Methodology 3. Results 4. Discussion 5. Conclusion 6. References 7. Appendix 8. Tables 9. Figures 10. Supplementary Materials 11. Notes 12. References 13. Appendix 14. Tables 15. Figures 16. Supplementary Materials 17. Notes 18. References 19. Appendix 20. Tables 21. Figures 22. Supplementary Materials 23. Notes 24. References 25. Appendix 26. Tables 27. Figures 28. Supplementary Materials 29. Notes 30. References 31. Appendix 32. Tables 33. Figures 34. Supplementary Materials 35. Notes 36. References 37. Appendix 38. Tables 39. Figures 40. Supplementary Materials 41. Notes 42. References 43. Appendix 44. Tables 45. Figures 46. Supplementary Materials 47. Notes 48. References 49. Appendix 50. Tables 51. Figures 52. Supplementary Materials 53. Notes 54. References 55. Appendix 56. Tables 57. Figures 58. Supplementary Materials 59. Notes 60. References 61. Appendix 62. Tables 63. Figures 64. Supplementary Materials 65. Notes 66. References 67. Appendix 68. Tables 69. Figures 70. Supplementary Materials 71. Notes 72. References 73. Appendix 74. Tables 75. Figures 76. Supplementary Materials 77. Notes 78. References 79. Appendix 80. Tables 81. Figures 82. Supplementary Materials 83. Notes 84. References 85. Appendix 86. Tables 87. Figures 88. Supplementary Materials 89. Notes 90. References 91. Appendix 92. Tables 93. Figures 94. Supplementary Materials 95. Notes 96. References 97. Appendix 98. Tables 99. Figures 100. Supplementary Materials 101. Notes 102. References 103. Appendix 104. Tables 105. Figures 106. Supplementary Materials 107. Notes 108. References 109. Appendix 110. Tables 111. Figures 112. Supplementary Materials 113. Notes 114. References 115. Appendix 116. Tables 117. Figures 118. Supplementary Materials 119. Notes 120. References 121. Appendix 122. Tables 123. Figures 124. Supplementary Materials 125. Notes 126. References 127. Appendix 128. Tables 129. Figures 130. Supplementary Materials 131. Notes 132. References 133. Appendix 134. Tables 135. Figures 136. Supplementary Materials 137. Notes 138. References 139. Appendix 140. Tables 141. Figures 142. Supplementary Materials 143. Notes 144. References 145. Appendix 146. Tables 147. Figures 148. Supplementary Materials 149. Notes 150. References 151. Appendix 152. Tables 153. Figures 154. Supplementary Materials 155. Notes 156. References 157. Appendix 158. Tables 159. Figures 160. Supplementary Materials 161. Notes 162. References 163. Appendix 164. Tables 165. Figures 166. Supplementary Materials 167. Notes 168. References 169. Appendix 170. Tables 171. Figures 172. Supplementary Materials 173. Notes 174. References 175. Appendix 176. Tables 177. Figures 178. Supplementary Materials 179. Notes 180. References 181. Appendix 182. Tables 183. Figures 184. Supplementary Materials 185. Notes 186. References 187. Appendix 188. Tables 189. Figures 190. Supplementary Materials 191. Notes 192. References 193. Appendix 194. Tables 195. Figures 196. Supplementary Materials 197. Notes 198. References 199. Appendix 200. Tables 201. Figures 202. Supplementary Materials 203. Notes 204. References 205. Appendix 206. Tables 207. Figures 208. Supplementary Materials 209. Notes 210. References 211. Appendix 212. Tables 213. Figures 214. Supplementary Materials 215. Notes 216. References 217. Appendix 218. Tables 219. Figures 220. Supplementary Materials 221. Notes 222. References 223. Appendix 224. Tables 225. Figures 226. Supplementary Materials 227. Notes 228. References 229. Appendix 230. Tables 231. Figures 232. Supplementary Materials 233. Notes 234. References 235. Appendix 236. Tables 237. Figures 238. Supplementary Materials 239. Notes 240. References 241. Appendix 242. Tables 243. Figures 244. Supplementary Materials 245. Notes 246. References 247. Appendix 248. Tables 249. Figures 250. Supplementary Materials 251. Notes 252. </p>
--

Proposed Sound Proof Vacuum

Cleaner and Water Power Jet

[illegible]

Date: January 2021 Scale:

	1:50
--	------

DC/2024/000



A1 Forme