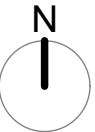
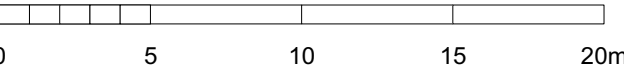


Planting Schedule							
Shrubs and Herbaceous Perennials							
Qty	Latin Name	Common Name	Height	Scheduled Size	Rate/Spacing		
119	Cornus alba 'Kesselringii'	White Dogwood	60-80cm	3L	2 Plants/sq m		
7	Corylus maxima 'Purpurea'	Purple Hazel	60-80cm	10L	0		
157	Escallonia ivelyi	Escallonia	40-60cm	3L	2 Plants/sq m		
9	Mahonia x media 'Charity'	Oregon Grape	60-80cm	10L	0		
119	Philadelphus 'Belle Etoile'	Mock Orange	40-60cm	3L	2 Plants/sq m		
157	Photinia x fraseri 'Red Robin'	Photinia	30-40cm	3L	2 Plants/sq m		
119	Pyracantha 'Orange Glow'	Firethorn 'Orange Glow'	30-40cm	3L	2 Plants/sq m		
6	Syringa vulgaris	Common Lilac	60-80cm	10L	0		
119	Viburnum plicatum 'Mariesii'	Japanese snowball	30-40cm	3L	2 Plants/sq m		
Trees							
Qty	Latin Name	Common Name	Height	Form	Root Condition	Minimum Clear Stem	Girth
2	Acer griseum	Paperbark Maple	300-350cm	Selected Standard	RB	Min 200cm	10-12cm
4	Amelanchier lamarkii	Juneberry	175-200cm	Multistem	C		
2	Betula utilis jaquemontii	West Himalayan Birch	175-200cm	Multistem	C		
3	Cornus kousa var. chinensis	White Flowering Chinese Dogwood	175-200cm	Multistem	C		
2	Prunus serrula	Tibetan Cherry	175-200cm	Multistem	C		
3	Prunus subhirtella 'Autumnalis'	Winter Flowering Cherry	300-350cm	Selected Standard	RB	Min 200cm	10-12cm
2	Pyrus salicifolia 'Pendula'	Willow-leaved Pear	175-200cm	Selected Standard	RB		10-12cm

NOTES

This drawing is the property of FPCR Environment and Design Ltd and is issued on the condition it is not reproduced, retained or disclosed to any unauthorised person, either wholly or in part without written consent of FPCR Environment and Design Ltd.

Ordnance Survey base mapping - supplied by client.



KEY

- Site Boundary
- Trees
- Specimen Shrubs
- Planting Beds

NOTES:

- All trees to be supported with timber stake and tie.
- Species within mixed planting beds to be set out in single species groups of 3 or 5 plants.



KEY PLAN

-	02.11.2020	First Issue	CC / TRJ
rev	date	description	dm / chkd

- environmental assessment
- landscape design
- urban design
- ecology
- architecture
- arboriculture

FPCR Environment and Design Ltd
Lockington Hall
Lockington
Derby
DE74 2RH

t: 01509 672772
e: mail@fpcr.co.uk
w: www.fpcr.co.uk

client
Larkfleet Homes

project
**Land off Middlegate Road,
Kirton, Frampton**

drawing title
BUFFER PLANTING LANDSCAPE PROPOSALS

scale 1:250 @ A1	drawn / checked CC / TRJ	revision date 02 November 2020
drawing number		rev