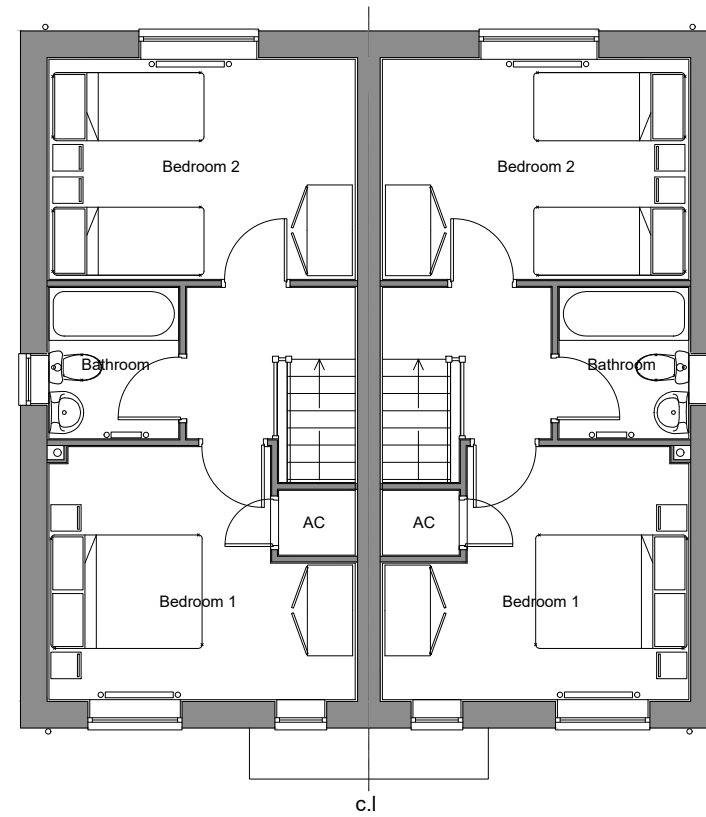
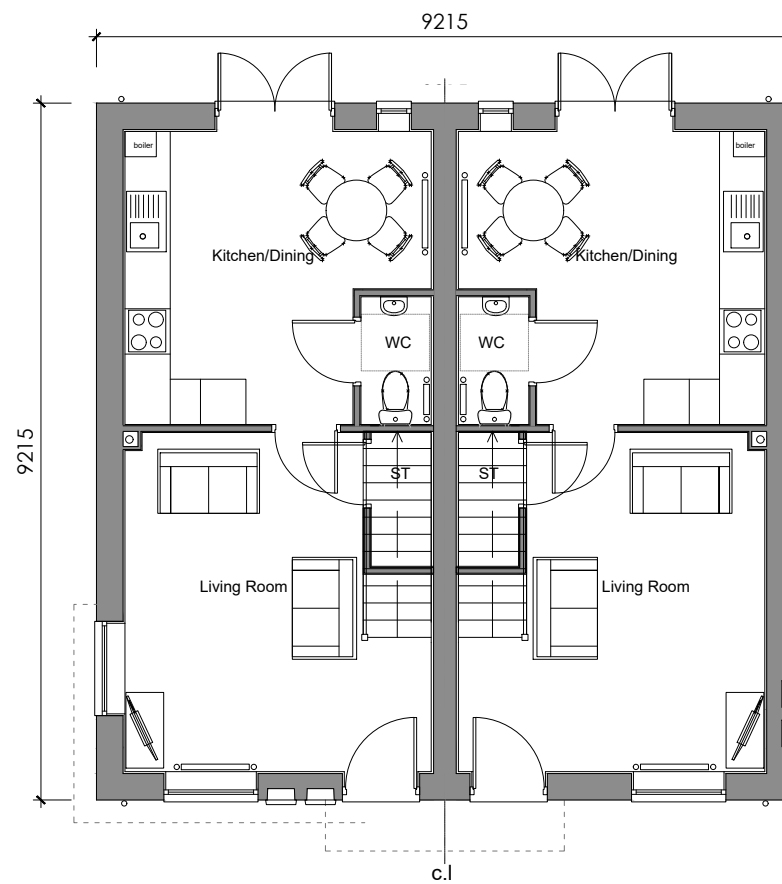


0 1 5m Scale 1:100



Plot 44 Type 13 - 2 Bed, 4 Person, GIA: 69.01m² Plot 45 Type 13 - 2 Bed, 4 Person, GIA: 69.01m²

First Floor Plan



Plot 44 Type 13 - 2 Bed, 4 Person, GIA: 69.01m² Plot 45 Type 13 - 2 Bed, 4 Person, GIA: 69.01m²

Ground Floor Plan

Revisions

A
14.09.2020 - Minor layout amendments. Plot numbers updated to suit revised site plan.

B
01.04.2021 - Ground floor layout amendments.

Project

Proposed Residential Development, Norfolk Street, Boston

Client

Longhurst Group

Drawing

Block Type I - Floor Plans
1:100 @ A3

Date

September 2020

core⁺
architects

www.core-architects.co.uk

The Terrace, Grantham Street, Lincoln, LN2 1BD 01522 525901

Copyright © 2021 Core Plus Architects Limited Do Not Scale

664-2-019

B