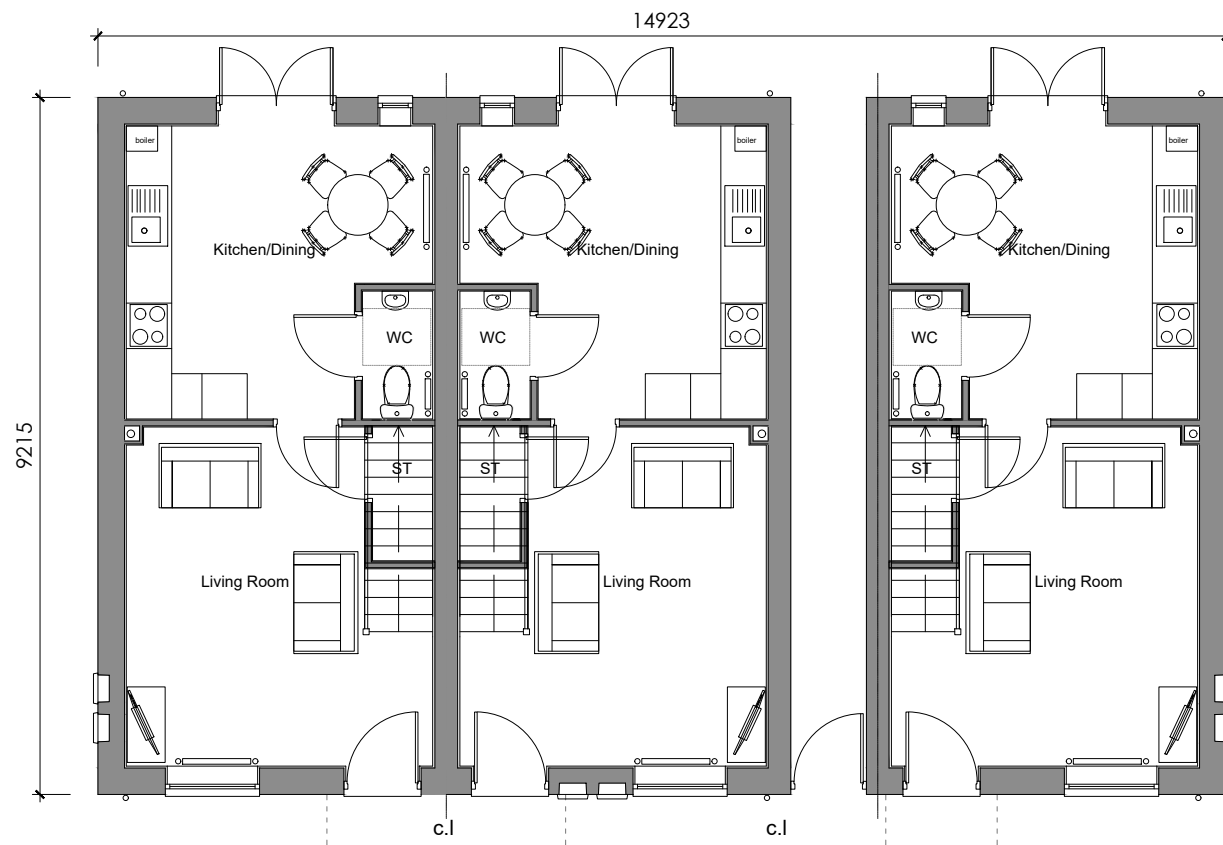


Plots 09, 14
Type 13 - 2 Bed, 4 Person, GIA: 69.01m²

Plots 10, 15
Type 13 Ext - 2 Bed, 4 Person, GIA: 77.12m²

Plots 11, 16
Type 13 - 2 Bed, 4 Person, GIA: 69.01m²

First Floor Plan

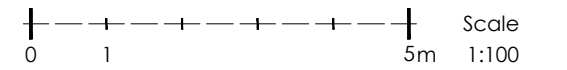


Plots 09, 14
Type 13 - 2 Bed, 4 Person, GIA: 69.01m²

Plots 10, 15
Type 13 Ext - 2 Bed, 4 Person, GIA: 77.12m²

Plots 11, 16
Type 13 - 2 Bed, 4 Person, GIA: 69.01m²

Ground Floor Plan



Revisions

A

14.09.2020 - Minor layout amendments. Plot numbers updated to suit revised site plan.

B

01.04.2021 - Ground floor layout amendments.

Project

Proposed Residential
Development, Norfolk Street,
Boston

Client

Longhurst Group

Drawing

Block Type D - Floor Plans
1:100 @ A3

Date

September 2020

core⁺
architects

www.core-architects.co.uk

The Terrace, Grantham Street, Lincoln, LN2 1BD 01522 525901

Copyright © 2021 Core Plus Architects Limited Do Not Scale

664-2-014

B