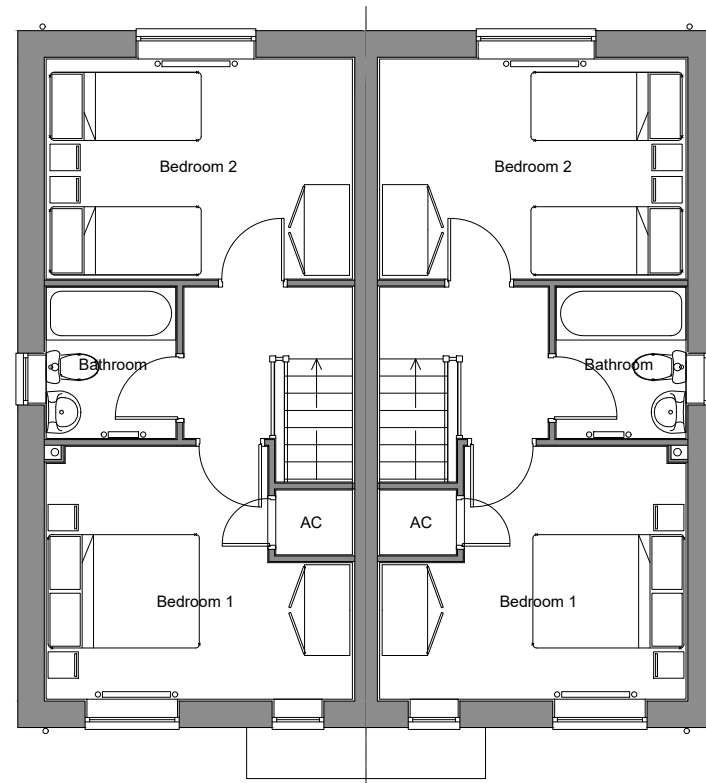


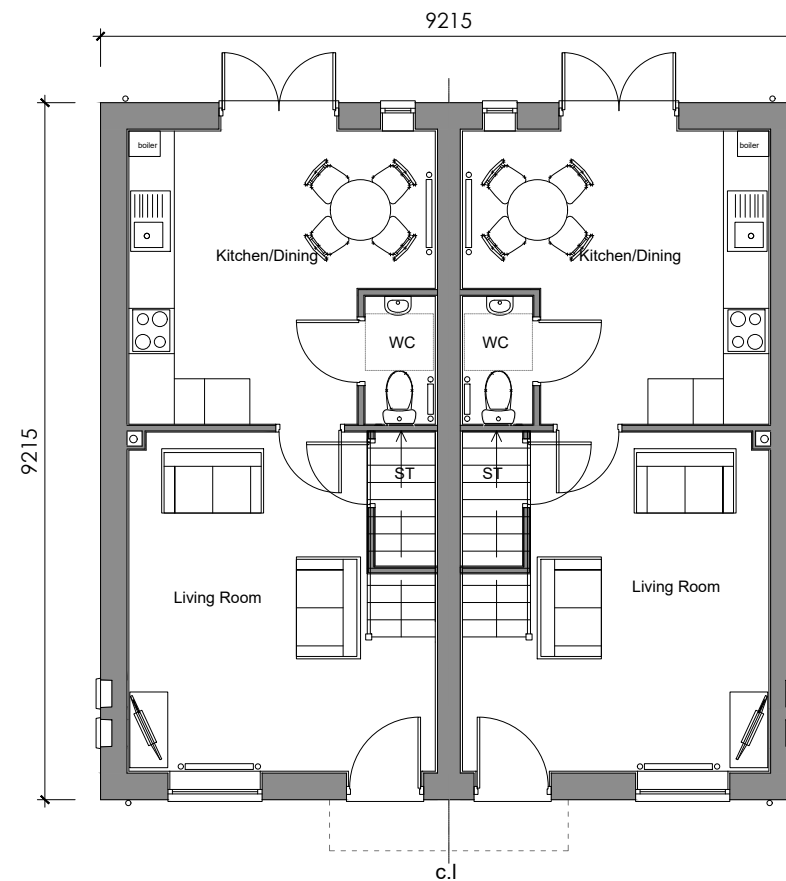
0 1 5m Scale 1:100



Plots 04, 12, 19, 24, 34, 36, 38  
Type 13 - 2 Bed, 4 Person, GIA: 69.01m<sup>2</sup>

Plots 05, 13, 20, 25, 35, 37, 39  
Type 13 - 2 Bed, 4 Person, GIA: 69.01m<sup>2</sup>

First Floor Plan



Plots 04, 12, 19, 24, 34, 36, 38  
Type 13 - 2 Bed, 4 Person, GIA: 69.01m<sup>2</sup>

Plots 05, 13, 20, 25, 35, 37, 39  
Type 13 - 2 Bed, 4 Person, GIA: 69.01m<sup>2</sup>

Ground Floor Plan

#### Revisions

**A**

14.09.2020 - Minor layout amendments. Plot numbers updated to suit revised site plan.

**B**

01.04.2021 - Ground floor layout amendments.

#### Project

Proposed Residential  
Development, Norfolk Street,  
Boston

#### Client

Longhurst Group

#### Drawing

Block Type B - Floor Plans  
1:100 @ A3

#### Date

September 2020

core<sup>+</sup>  
architects

[www.core-architects.co.uk](http://www.core-architects.co.uk)

The Terrace, Grantham Street, Lincoln, LN2 1BD 01522 525901

Copyright © 2021 Core Plus Architects Limited Do Not Scale

664-2-012

B