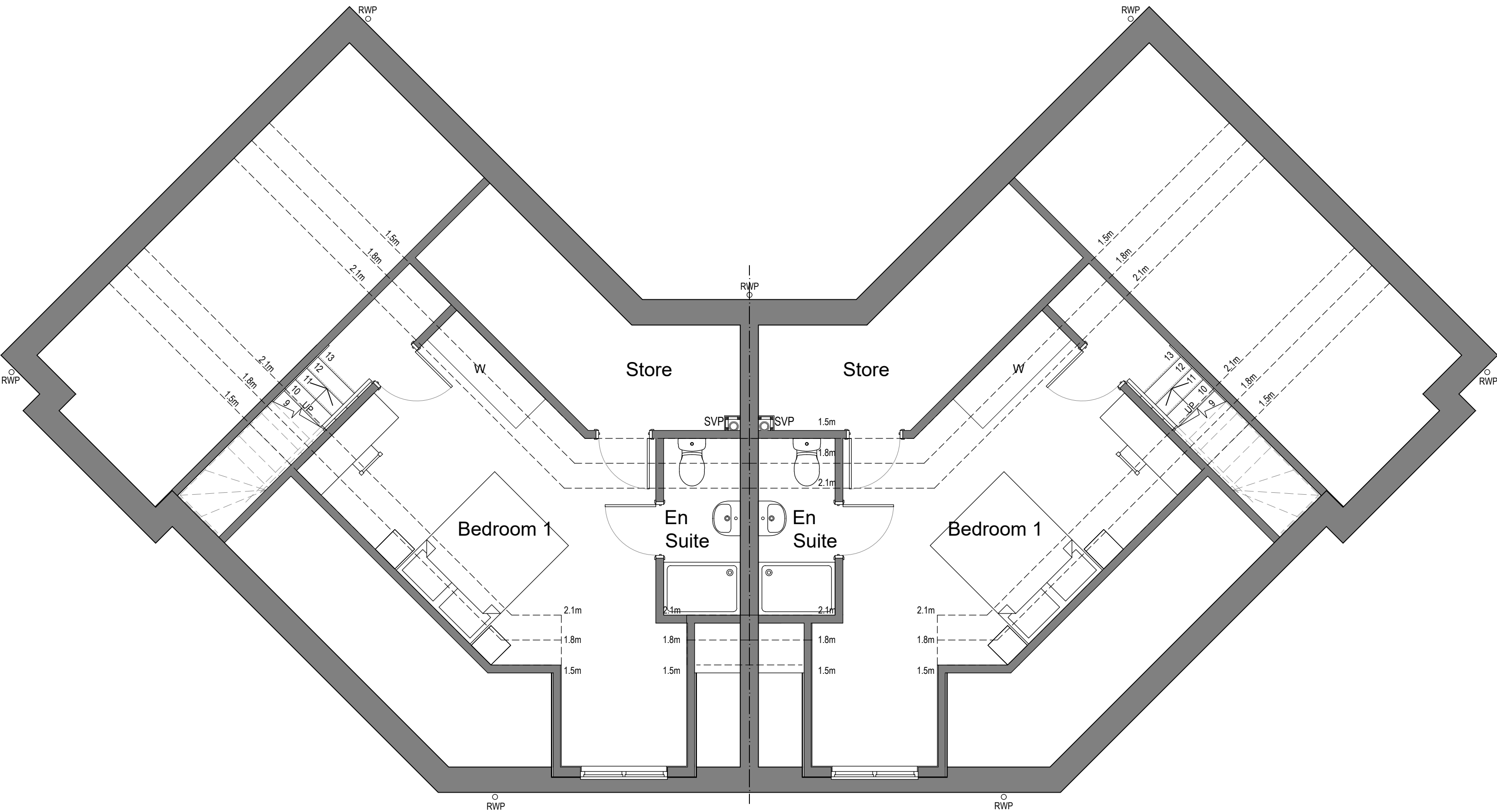


NOTES:

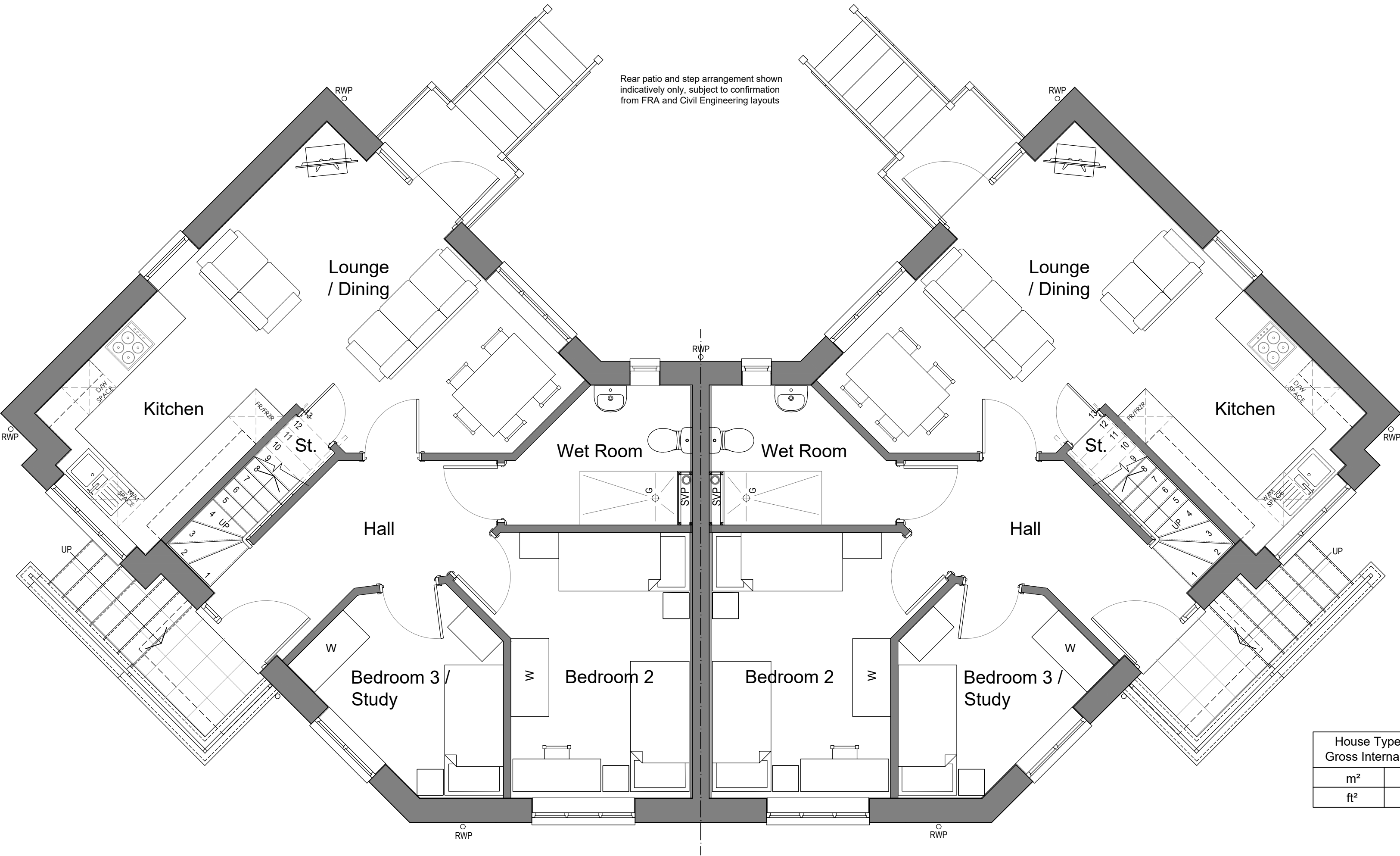
The copyright © of this drawing is vested in the Architect and must not be copied or reproduced without consent.

All Contractors must visit the site and be responsible for taking and checking dimensions relative to their work. Sutton and Wilkinson Chartered Architects to be advised of any variation between drawings and site conditions.

DO NOT SCALE OFF THIS DRAWING... IF IN DOUBT ASK



FIRST FLOOR PLAN



GROUND FLOOR PLAN



FRONT ELEVATION

Front entrance step arrangement shown indicatively only, subject to confirmation from FRA and Civil Engineering layouts



FRONT ELEVATION

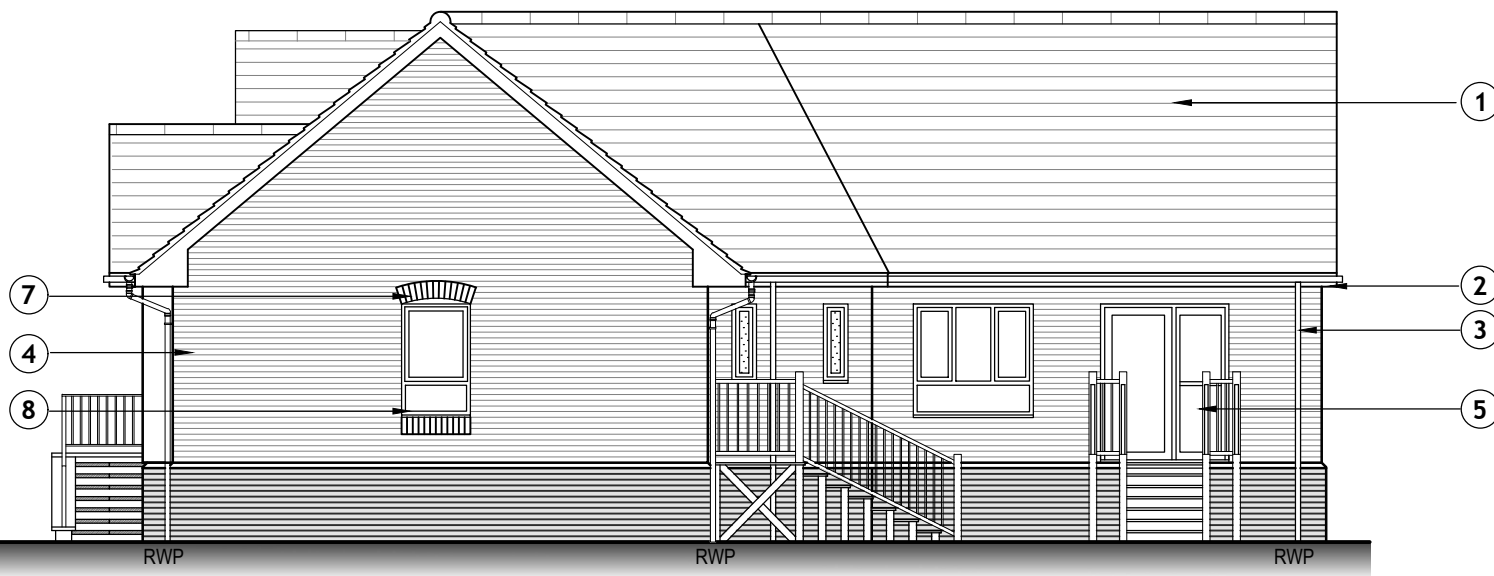
Front entrance step arrangement shown indicatively only, subject to confirmation from FRA and Civil Engineering layouts



REAR ELEVATION

Guarding requirements & proposed garden levels to be confirmed

Front entrance step arrangement shown indicatively only, subject to confirmation from FRA and Civil Engineering layouts



SIDE ELEVATION

Guarding requirements & proposed garden levels to be confirmed

REAR ELEVATION



FRONT ELEVATION

Front entrance step arrangement shown indicatively only, subject to confirmation from FRA and Civil Engineering layouts

MATERIALS LEGEND:

- 1 Concrete Roof Tiles - (Colour to LA approval)
- 2 UPVC Fascias & Soffit Boards, Colour - White
- 3 UPVC Rainwater Gutters & Downpipes, Colour - Black
- 4 Facing Brickwork - (To LA approval)
- 5 UPVC Double Glazed Windows, Colour - White
- 6 Steel Core GRP Door, Colour - T.B.C.
- 7 Arched Brick Header
- 8 Brick Soldier Cill Course
- 9 Through Colour Render (To LA approval)
- 10 Smooth Engineering Brick Plinth Below DPC - (To LA approval)
- 11 Feature Cant Brick Course (To LA approval)

REV	AMENDMENT:	INT	DATE:
A	First Floor layout revised to provide En-suite and Elevations revised to add variety to street scene.	SC	28.02.24
B	Drawing raised to Planning Issue and Windows revised to meet current Building Regulations.	VL	15.03.24

PLANNING

PROJECT:  
Residential Development  
Whitehouse Lane  
Boston  
Lincolnshire, PE21 0BE

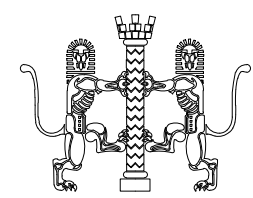
CLIENT:  
Opal Homes Ltd.

TITLE:  
House Type H (3 Bed 5 Person)  
Floor Plans & Elevations

SUTTON AND WILKINSON  
CHARTERED ARCHITECTS

Victoria House, 13 New Penkridge Road,  
Cannock, Staffs, WS11 1HW

Telephone: 01543 466441  
Facsimile: 01543 462469  
e-mail: office@suttonwilkinson.co.uk



SCALE	DRAWN	DATE	SIZE
1:50 / 1:100	VL	Dec. 23	A1
DRAWING NUMBER	REVISION		
2451 - 17	B		