



FRONT ELEVATION

Front entrance step arrangement shown indicatively only, subject to confirmation from FRA and Civil Engineering layouts



SIDE ELEVATION

Front entrance step arrangement shown indicatively only, subject to confirmation from FRA and Civil Engineering layouts



REAR ELEVATION

Rear patio and step arrangement shown indicatively only, subject to confirmation from FRA and Civil Engineering layouts



SIDE ELEVATION

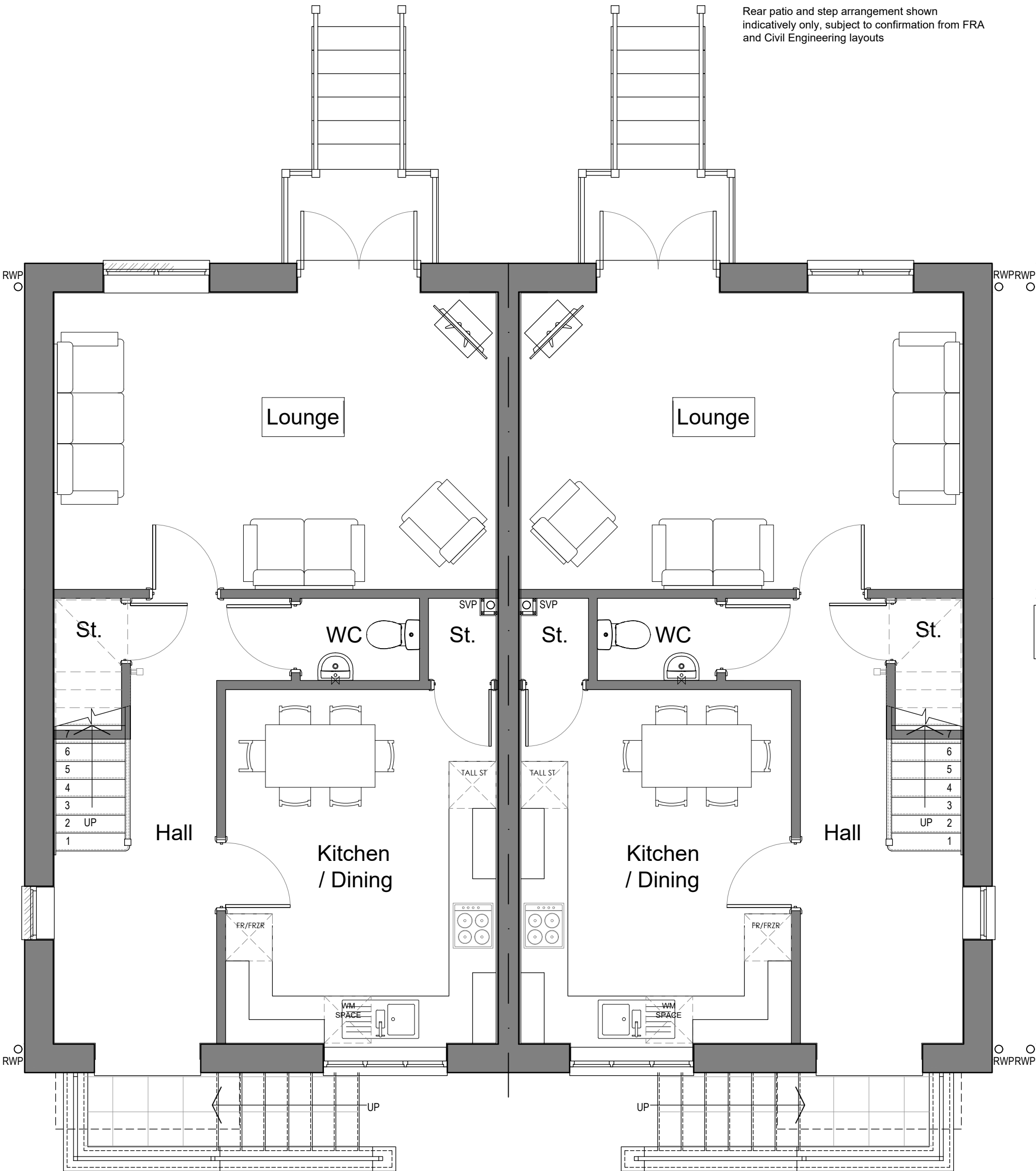
Front entrance step arrangement shown indicatively only, subject to confirmation from FRA and Civil Engineering layouts

Rear patio and step arrangement shown indicatively only, subject to confirmation from FRA and Civil Engineering layouts

MATERIALS LEGEND:

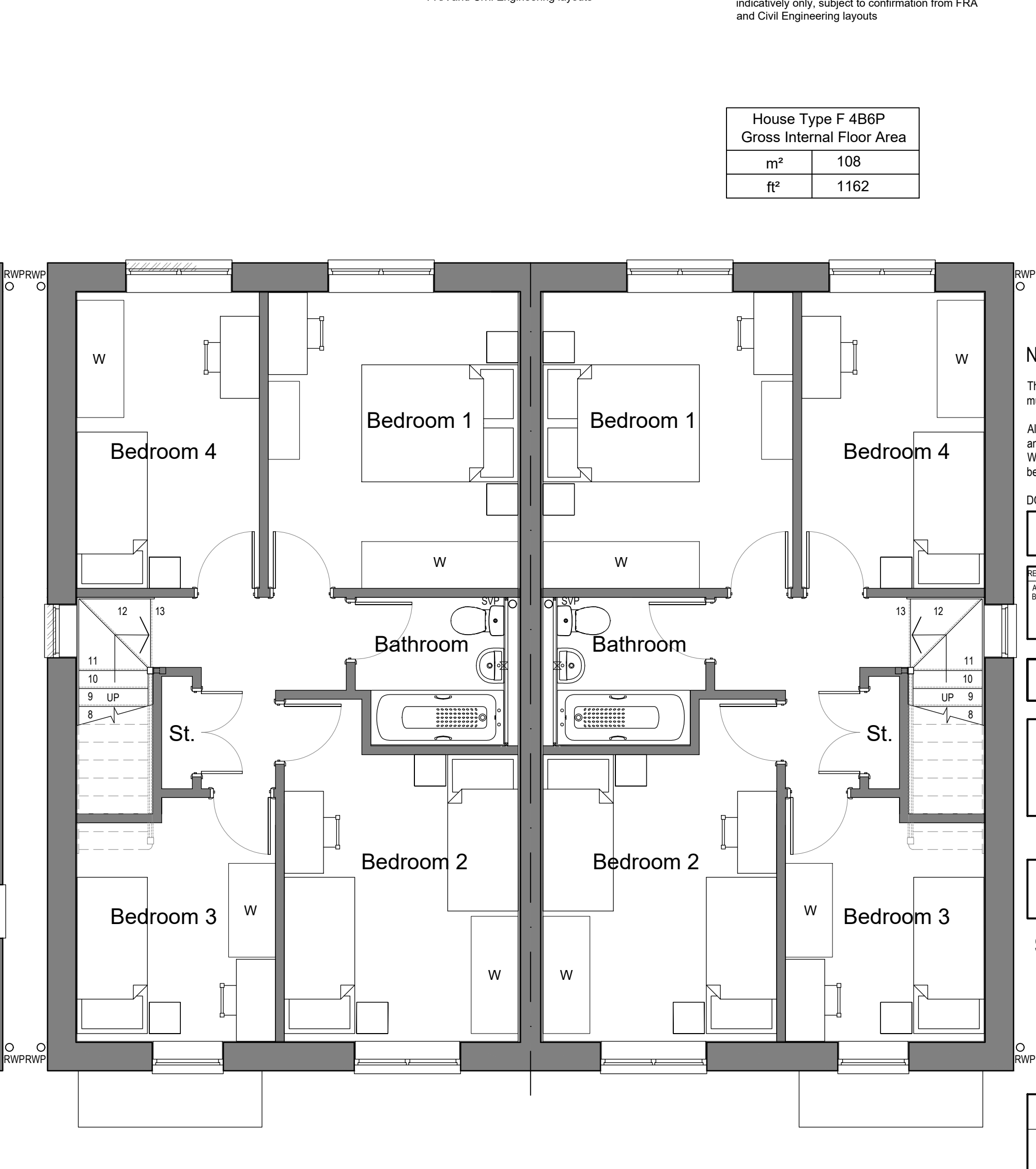
- ① Concrete Roof Tiles - (Colour to LA approval)
- ② UPVC Fascias, Soffit & Barge Boards, Colour - White
- ③ UPVC Rainwater Gutters & Downpipes, Colour - Black
- ④ GRP Entrance Canopy (Wessex Laverstock 1850 indicated)
- ⑤ Facing Brickwork - (To LA approval)
- ⑥ UPVC Double Glazed Windows, Colour - White
- ⑦ Steel Core GRP Door, Colour - T.B.C.
- ⑧ Arched Brick Header
- ⑨ Brick Soldier Cill Course
- ⑩ Brick Corbel Detail
- ⑪ Smooth Engineering Brick Plinth Below DPC - (To LA approval)
- ⑫ Feature Cant Brick Course (To LA approval)
- ⑬ Through Colour Render (To LA approval)

House Type F 4B6P Gross Internal Floor Area	
m <sup>2</sup>	108
ft <sup>2</sup>	1162



GROUND FLOOR PLAN

Front entrance step arrangement shown indicatively only, subject to confirmation from FRA and Civil Engineering layouts



FIRST FLOOR PLAN

NOTES:

The copyright © of this drawing is vested in the Architect and must not be copied or reproduced without consent.

All Contractors must visit the site and be responsible for taking and checking dimensions relative to their work. Sutton and Wilkinson Chartered Architects to be advised of any variation between drawings and site conditions.

DO NOT SCALE OFF THIS DRAWING... IF IN DOUBT ASK

Elevations to be read in conjunction with Street Elevations for alternative Front Elevations.

REV/	AMENDMENT:	INT.	DATE:
A	Elevations revised to add variety to street scene.	SC	28.02.24
B	Drawing raised to Planning Issue and Windows revised to meet current Building Regulations.	VL	15.03.24

PLANNING

PROJECT:  
Residential Development  
Whitehouse Lane  
Boston  
Lincolnshire, PE21 0BE

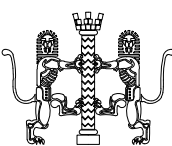
CLIENT:  
Opal Homes Ltd.

TITLE:  
House Type F (4 Bed 6 Person)  
Floor Plans & Elevations

SUTTON AND WILKINSON  
CHARTERED ARCHITECTS

Victoria House, 13 New Penkridge Road,  
Cannock, Staffs, WS11 1HW

Telephone: 01543 466441  
RWP Facsimile: 01543 462469  
e-mail: office@suttonwilkinson.co.uk



SCALE	DRAWN	DATE	SIZE
1:50 / 1:100	SC	Dec. 23	A2
DRAWING NUMBER			REVISION
2451 - 15			B