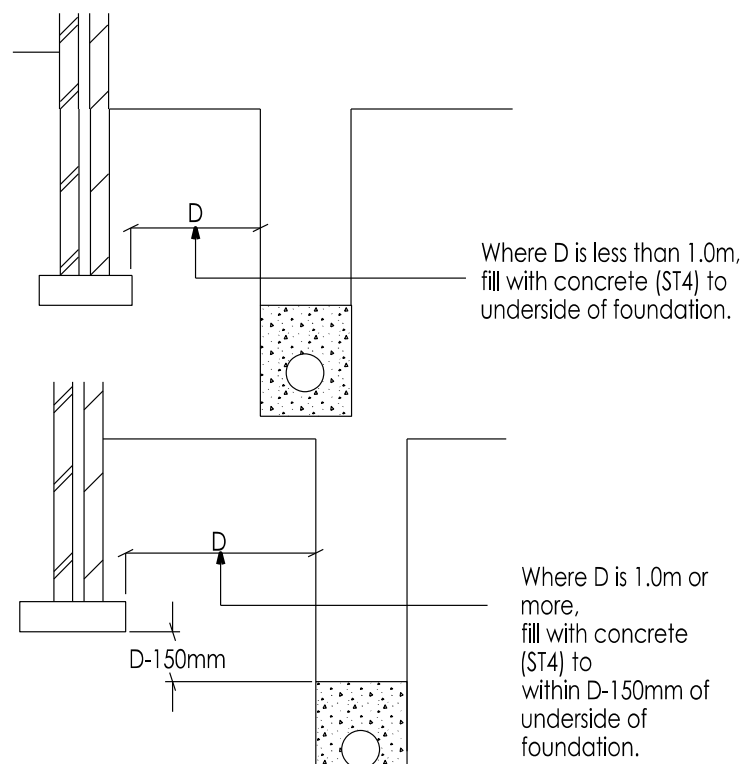
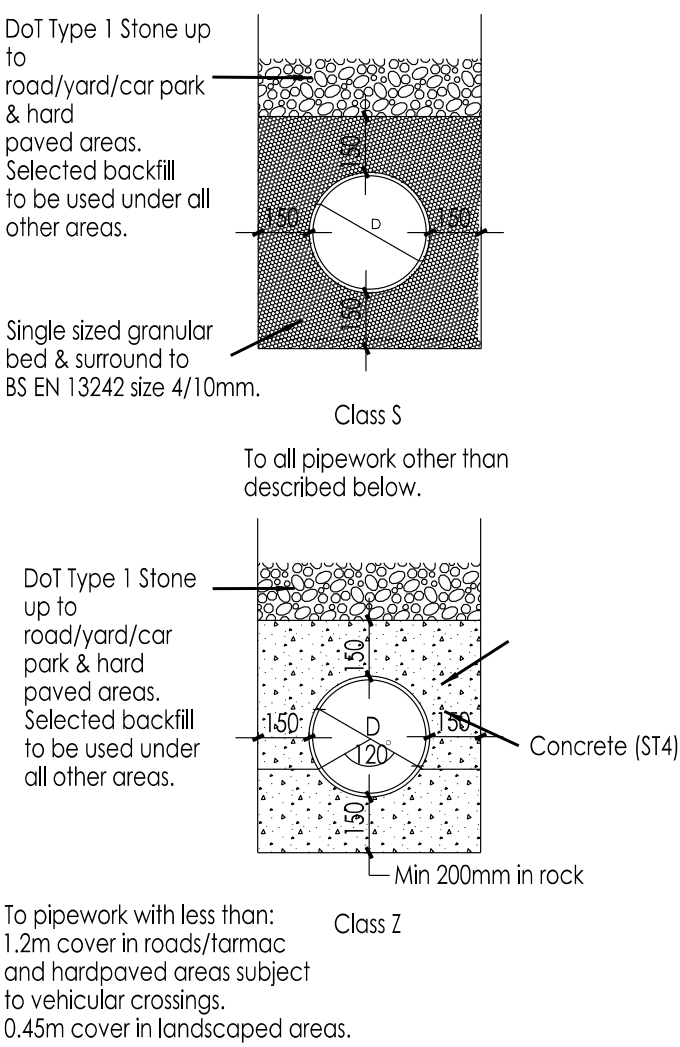


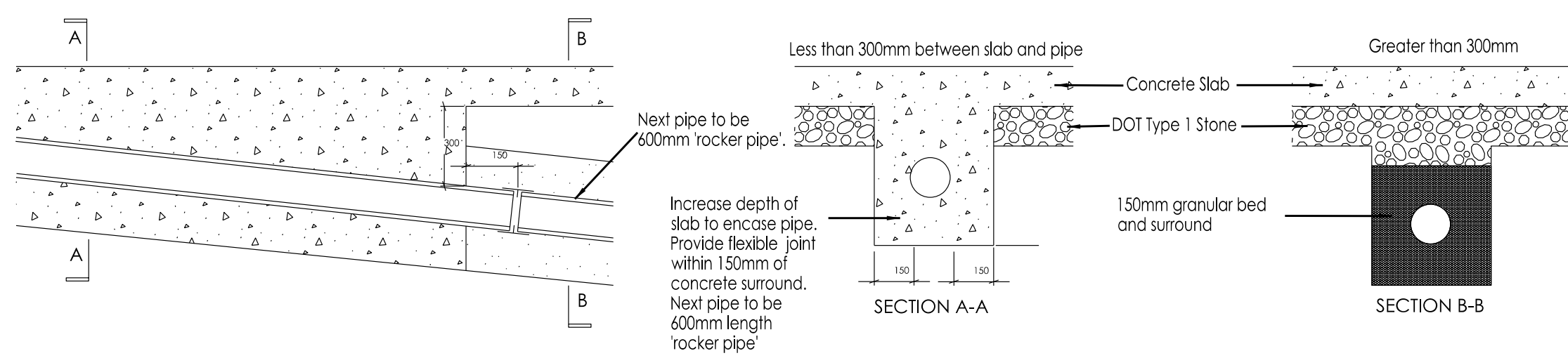
Pipe Runs Near Buildings



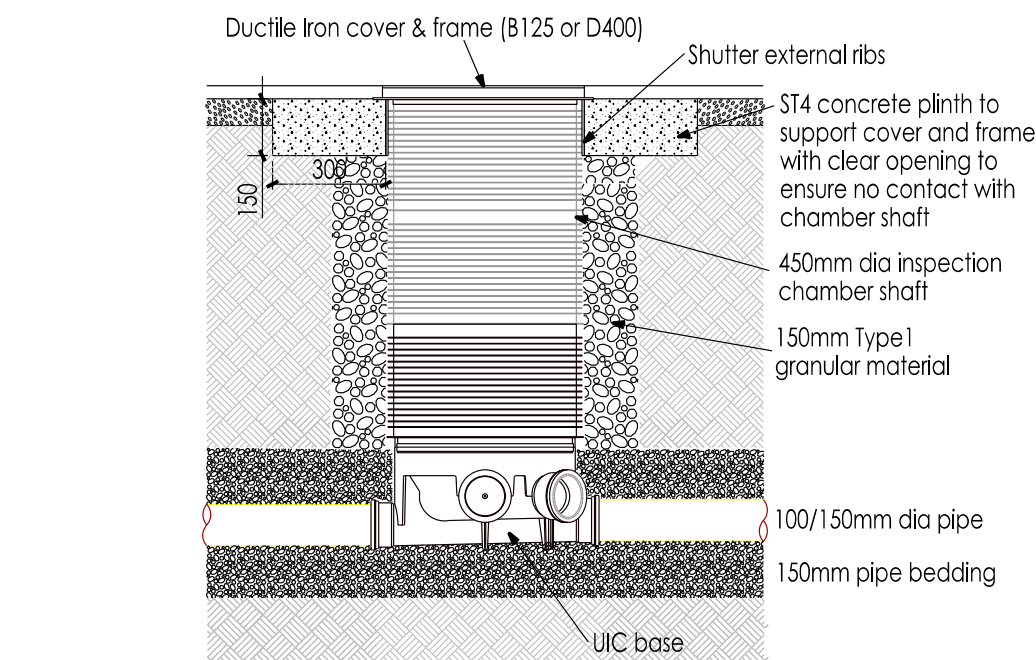
Standard Pipe Bedding Details



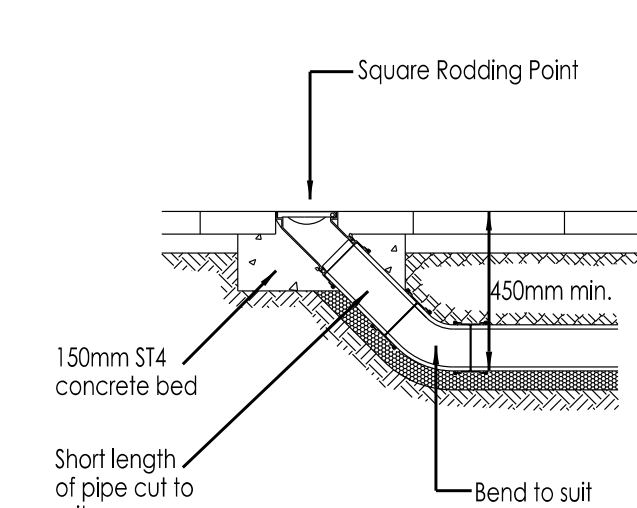
Pipes Under Buildings/Thru' Foundations



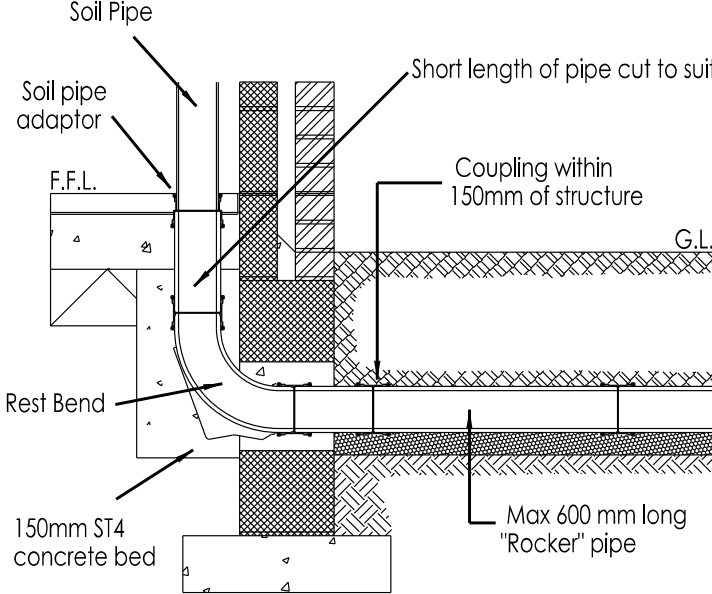
450 Universal Inspection Chamber (UIC)



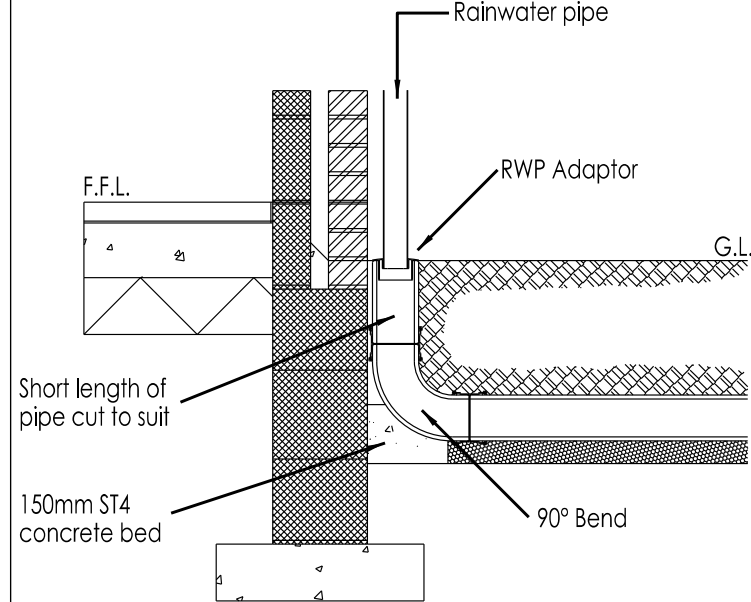
Rodding Eye Connection Detail



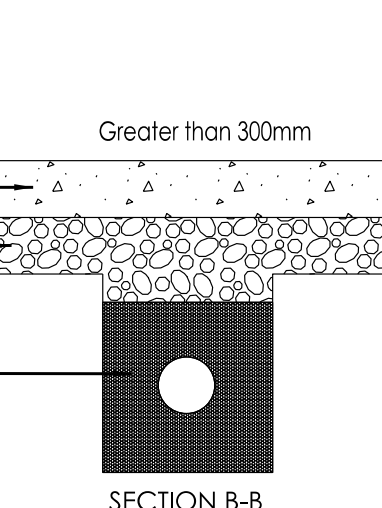
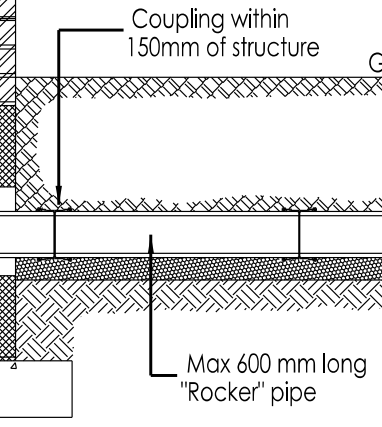
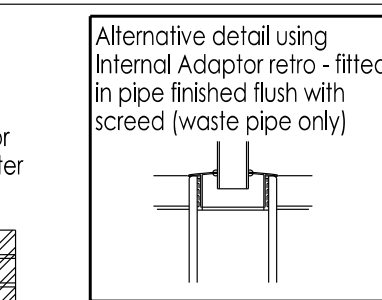
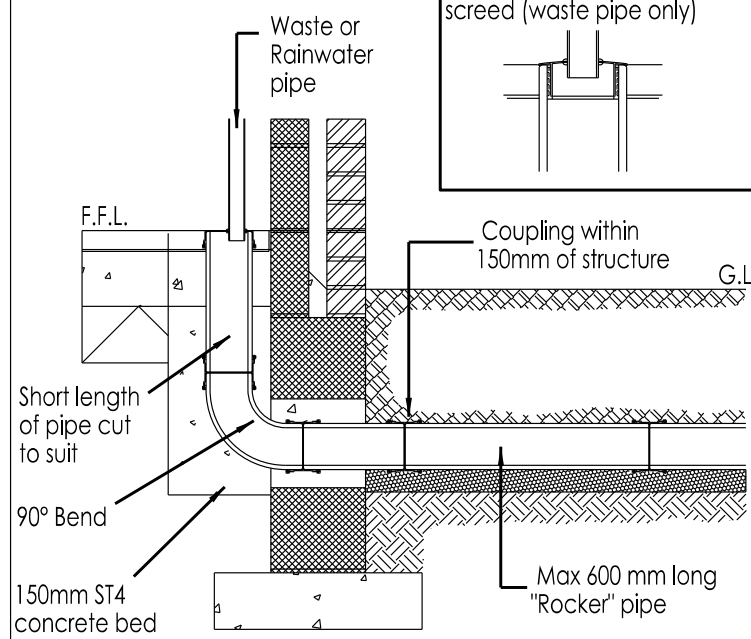
Soil & Vent Pipe / Stub Stack / W.C. Connection Detail



External Rainwater Pipe Connection Detail



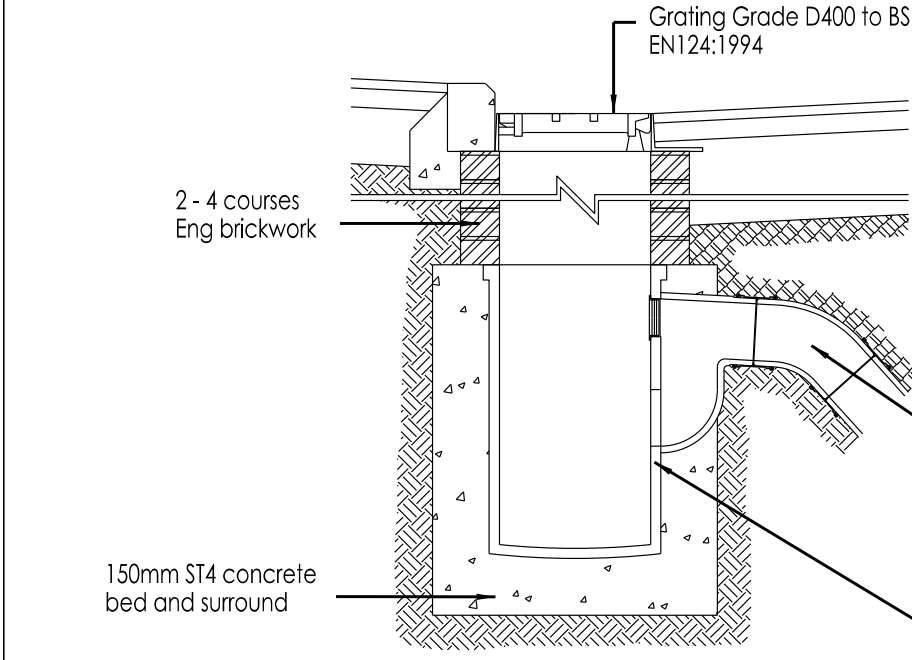
Internal Waste Pipe Connection Detail



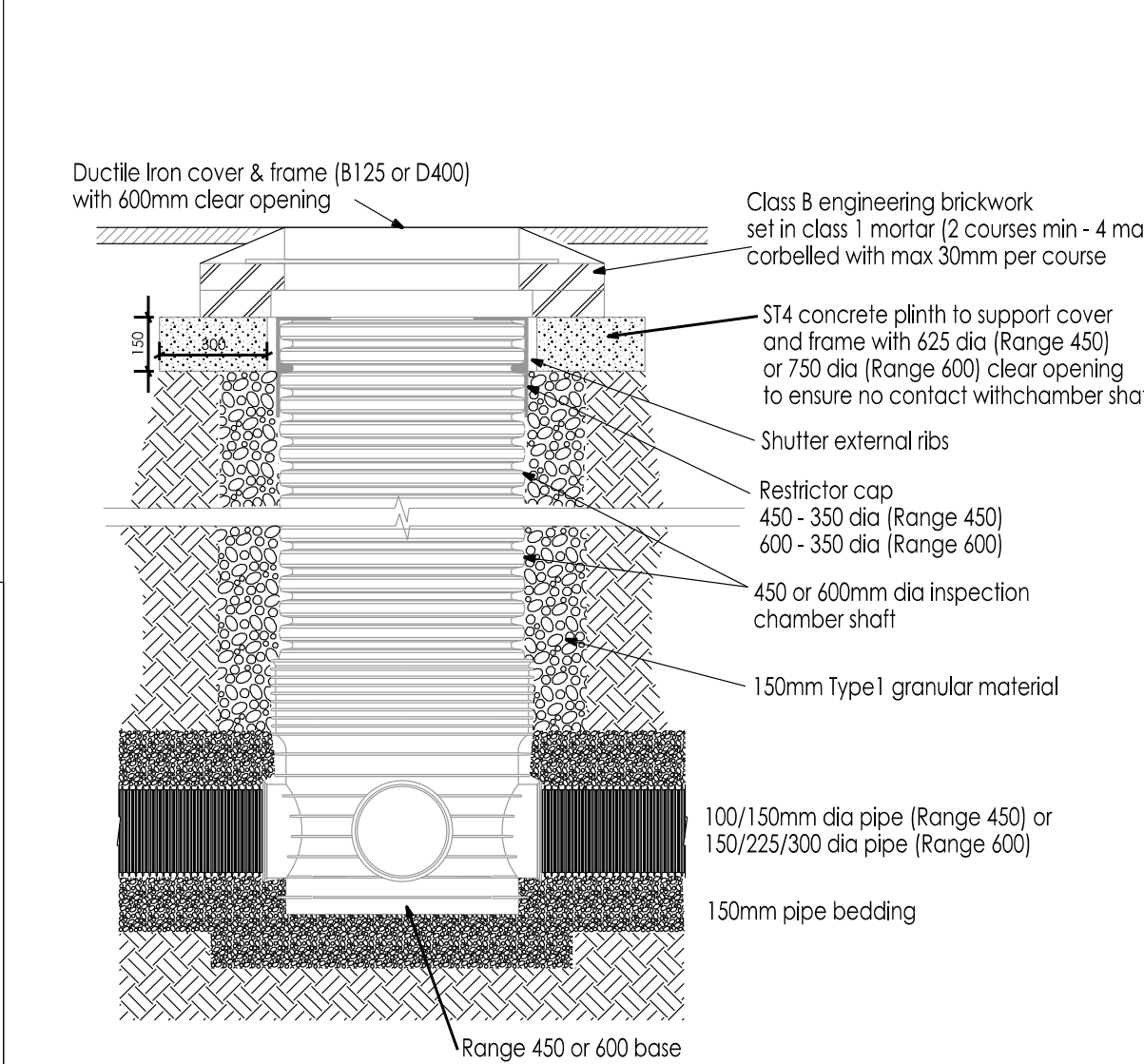
PPIC Installation Detail



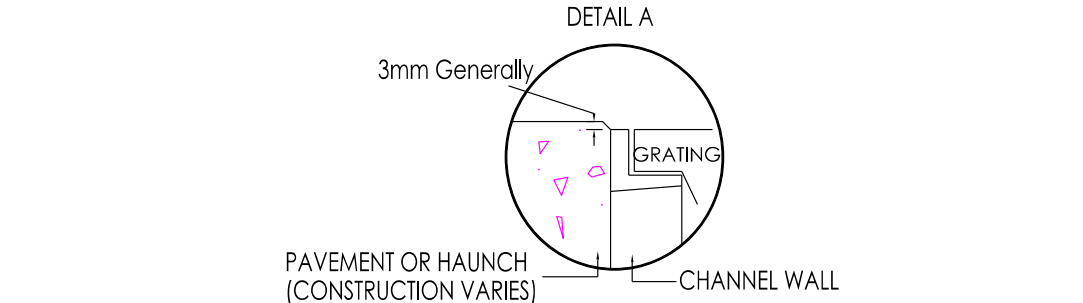
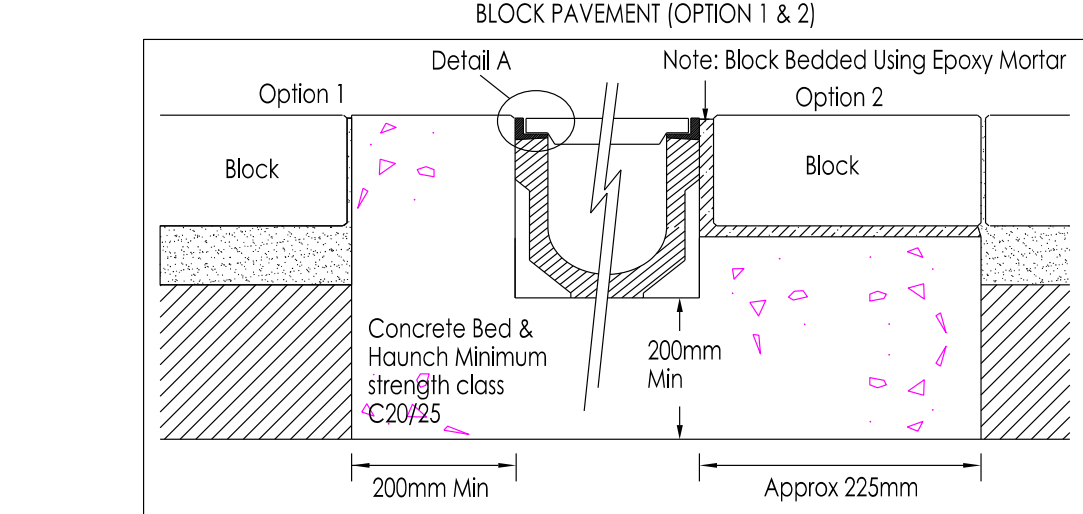
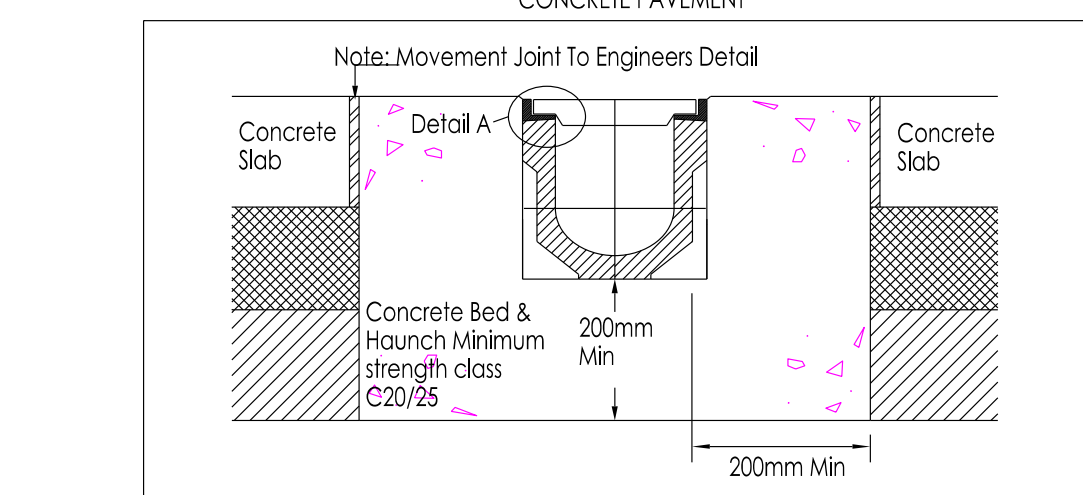
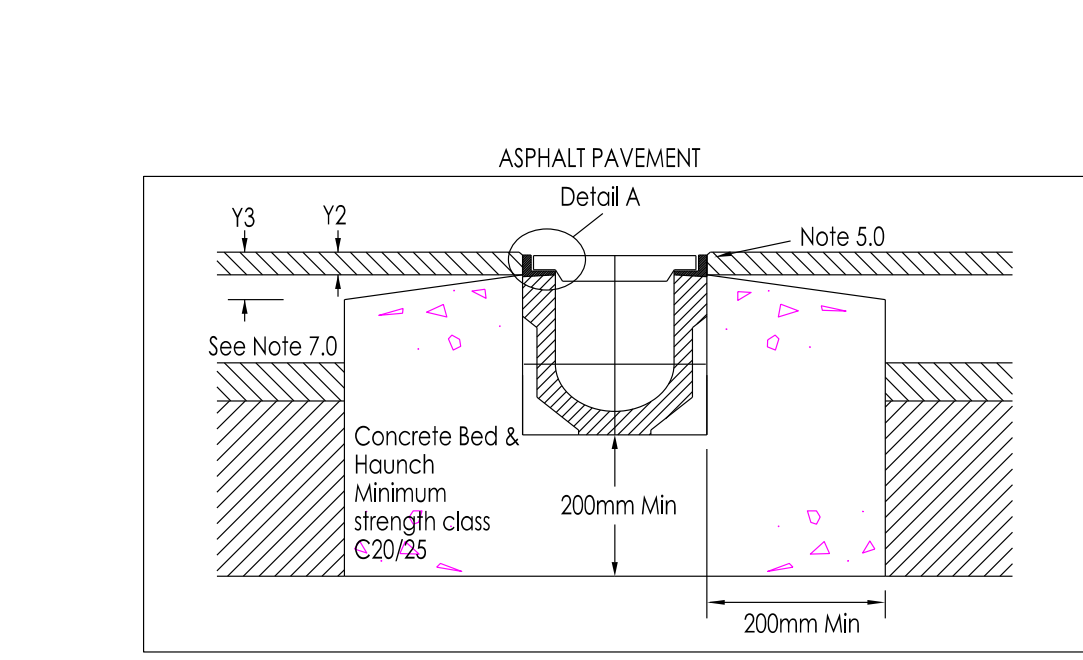
Road gully Connection Detail



Range 450/600 Chamber B125 / D400 Loading



ACO DRAINAGE CHANNEL DETAIL



1.0 GROUND CONDITIONS: The customer should ensure that the minimum dimensions shown are suitable for the existing ground conditions. Engineering advice may be necessary.

3.0 SURFACE CRACKS: Alternate crack control and movement joints transversely within bed and haunch may reduce unsightly surface cracking. Engineering advice may be required.

5.0 SURFACE PROTECTION: In asphalt pavements avoid contact between compaction equipment and channel/grating. This may be achieved by ensuring that the finished surface level lies above the grating level (by at least 3mm). Stones should be removed from grating prior to laying/rolling wearing course.

2.0 BLOCK PAVEMENTS: THE CHANNEL MUST BE SUPPORTED LATERALLY and therefore blocks must be restrained from movement by bedding securely, e.g. by using an Epoxy or Polymer Modified Mortar for bed and perpendicular joints. (For example RONAFIX Mortar Mix C or similar; From Ronacrete Tel 01279 638700). Engineering advice may be required.

4.0 JOINT SEALANT: Where ACO Drain channel joints and fittings are to be sealed (where used in foul water applications or where impermeability is required, for example) contact a sealant specialist for guidance on the most appropriate sealing compound to use.

6.0 GENERAL INSTALLATION NOTES: See drawing EI-E01-003-3 for general notes on installation.

7.0 ASPHALT PAVEMENT: Top of concrete haunch Y2 = 35mm maximum Y3 = 70mm maximum

8.0 BOLTS: To complete the installation, tighten the grating fixing bolts to a torque of 40Nm.

P1	Initial issue	JW	PAE	29/09/20
Rev	Description	Dm	Vfd	Date
As outlined in section 2.3 of the CIB Industry Guidance to Designers, insignificant risks can usually be ignored, as can risks arising from routine construction activities, unless the design compounds or significantly alters these risks. In accordance with CDM Regulations 8, 9 and 11, any significant risks relating to the design features shown on this drawing have been identified and are annotated thus:				
<input type="checkbox"/> No significant risks have been identified. <input type="checkbox"/> Significant risks have been identified - refer to notes on drawing for information on residual risks and any control measures to be employed.				
Refer to the current Designer's Risk Assessment sheets for further details.				
Designer's Signature		JW	Date 09/20	

Drawing Status	REVIEW & COMMENT
----------------	------------------

williams saunders
architecture: engineering: building consultancy
Sheppard Lockton House
Cafferata Way
Newark-on-Trent
Nottinghamshire. NG24 2TN

Tel: 01636 704361
Fax: 01636 702809
W: wms-saunders.co.uk

Also at Leeds, Lincoln, Wirsbworth

Project
Proposed Residential Development
Land off Fenside Road,
Boston

Client
Seagate Homes

Title
Domestic Drainage Details

WmS Project Ref.	Drawn	Date	Scale	@ A1
12079	JW	09/20		

Drawing/Document Reference							
Project	Originator	Zone	Level	Type	Role	Number	Status Rev.
12079	WMS	ZZ	XX	DR	C	39213	S3 - P1