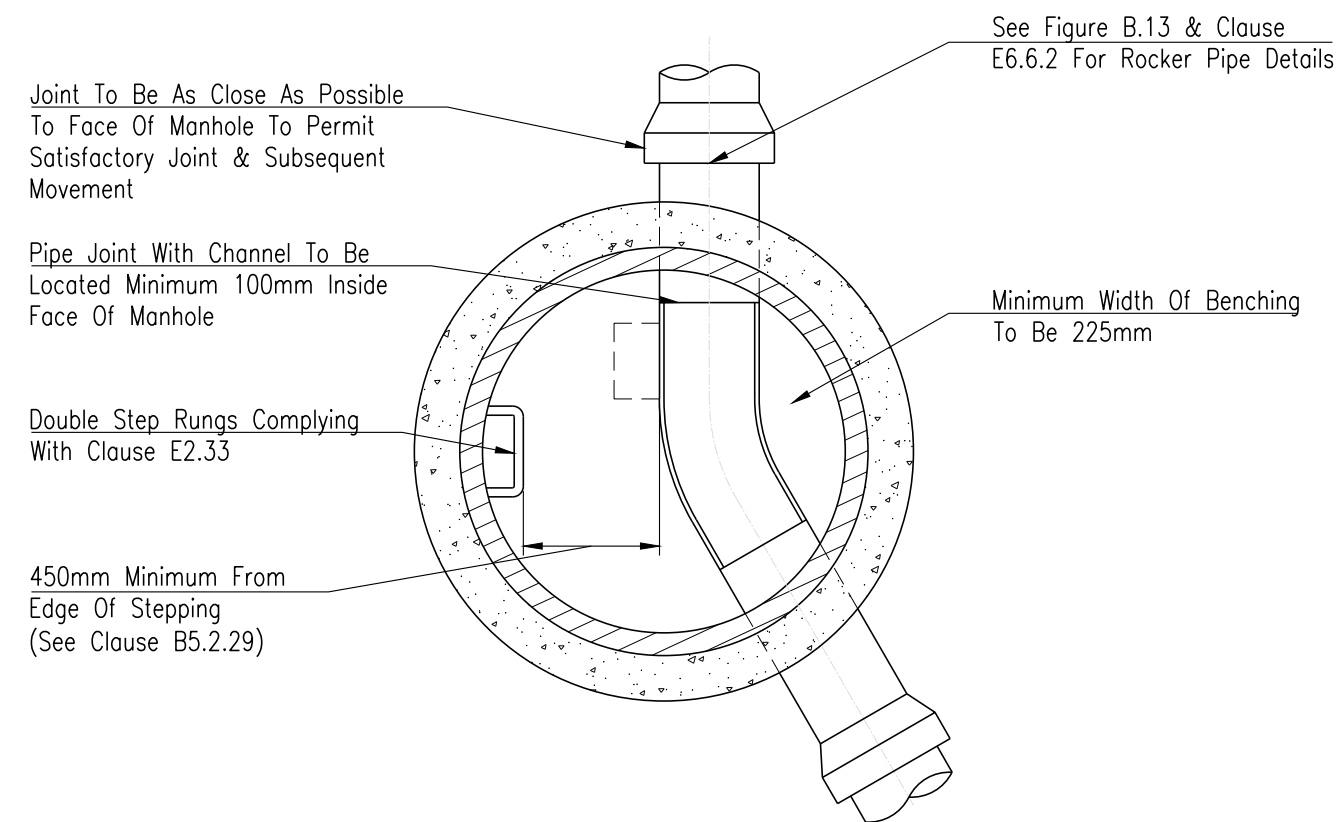


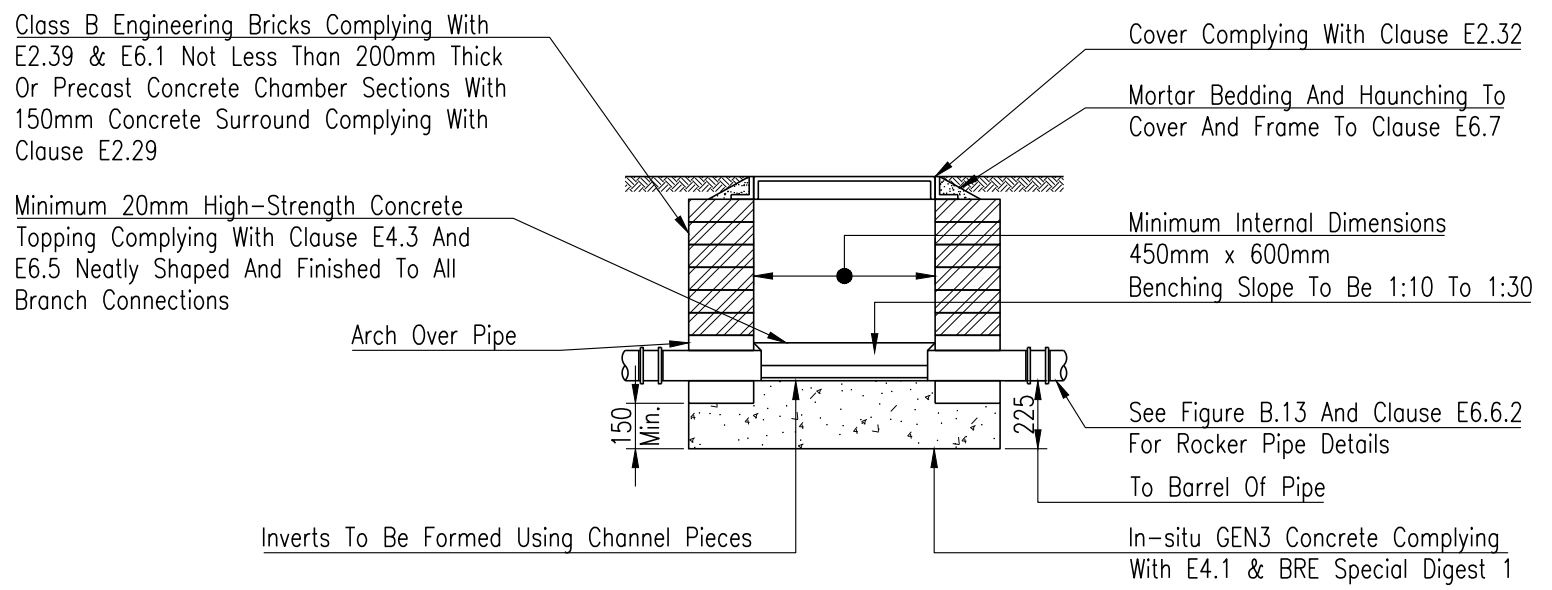
Section



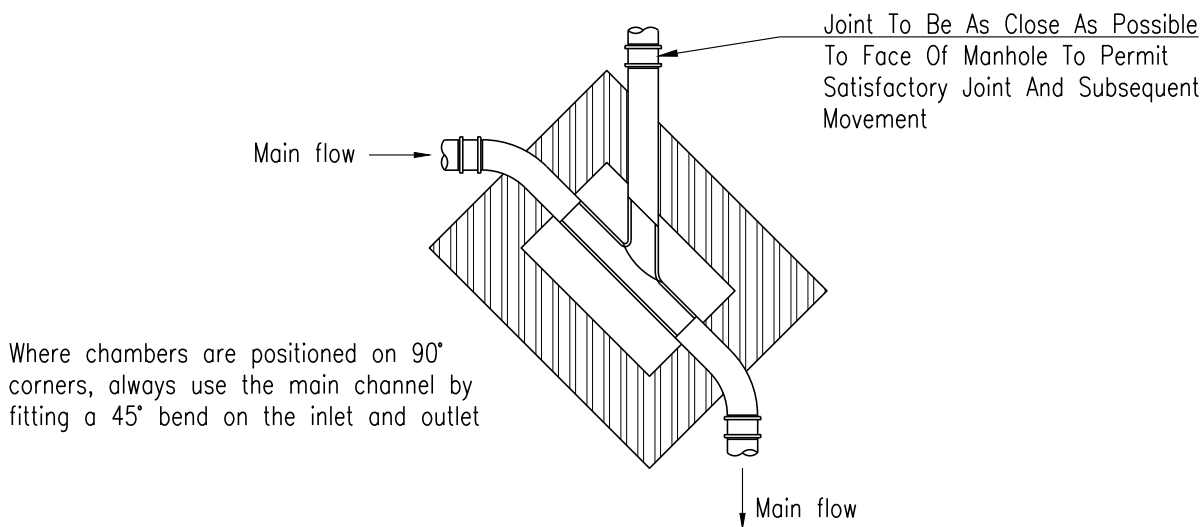
Plan

TYPE B MANHOLE DETAIL

Depth To Pipe Soffit 1.5m – 3m
Scale 1:25



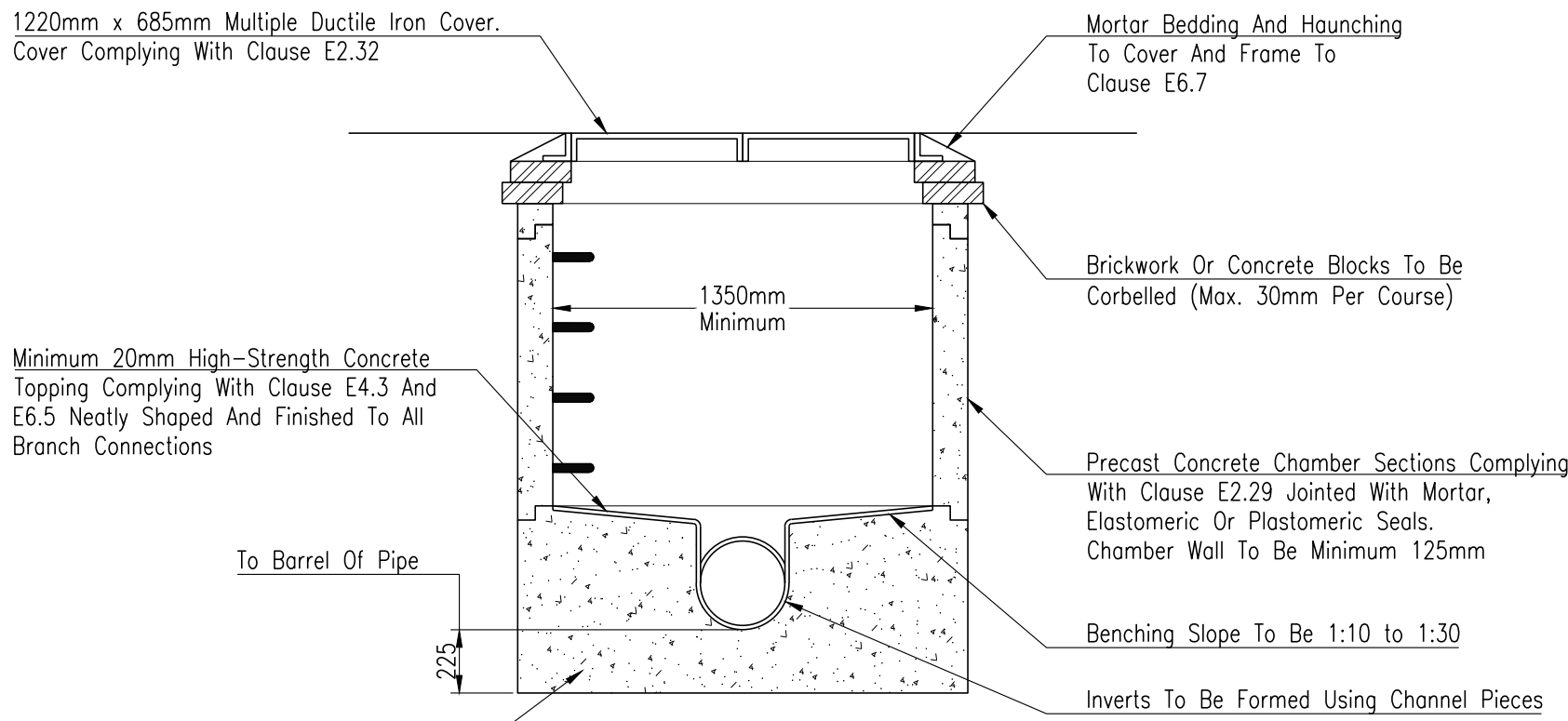
NOTE: The Use Of Pre-Cast Concrete Chamber Units To E2.29 With 150mm GEN3 In-Situ Concrete Complying With E4.1 And BRE Special Digest 1 In Place Of Brickwork Construction Is Permitted



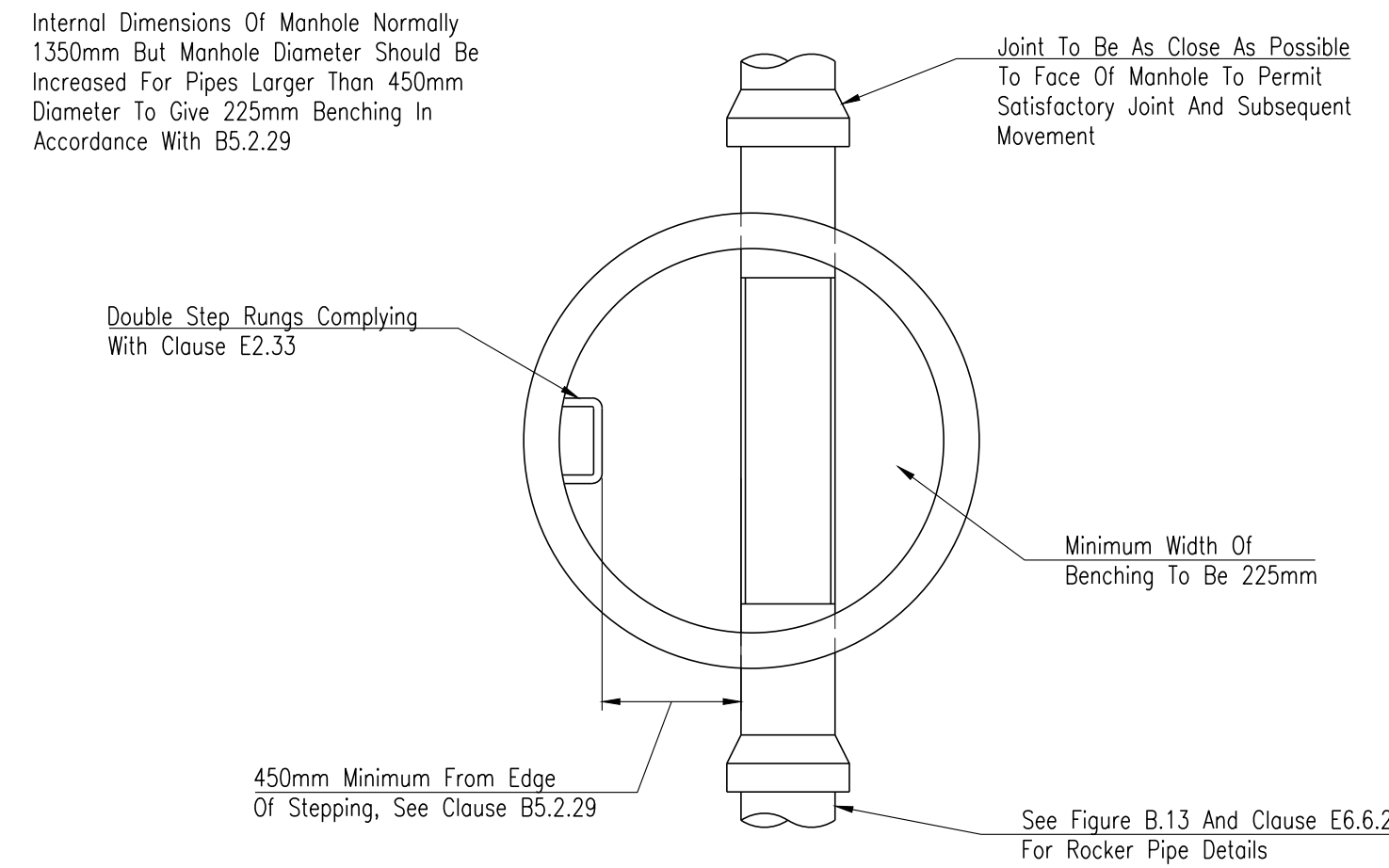
NOTE: Where The Access Chamber Is In The Highway (Including Any Footway), The Highway Authority Can Have Specific Requirements.

TYPE E INSPECTION CHAMBER DETAIL

Max. Depth To Pipe Soffit 1m
Scale 1:25



Section

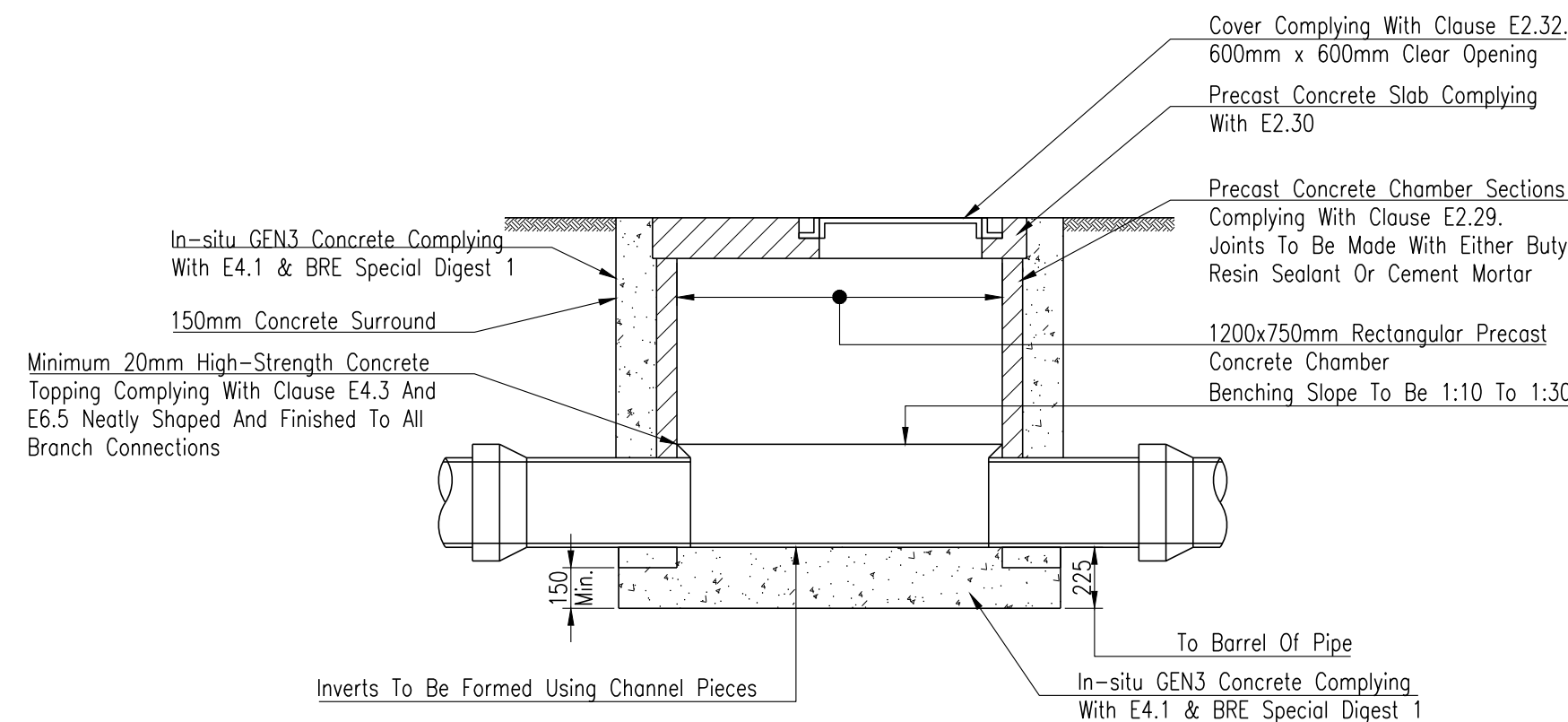


NOTE: The Use Of Pre-Cast Concrete Chamber Units To E2.29 With 150mm GEN3 In-Situ Concrete Complying With E4.1 And BRE Special Digest 1 In Place Of Brickwork Construction Is Permitted

Plan

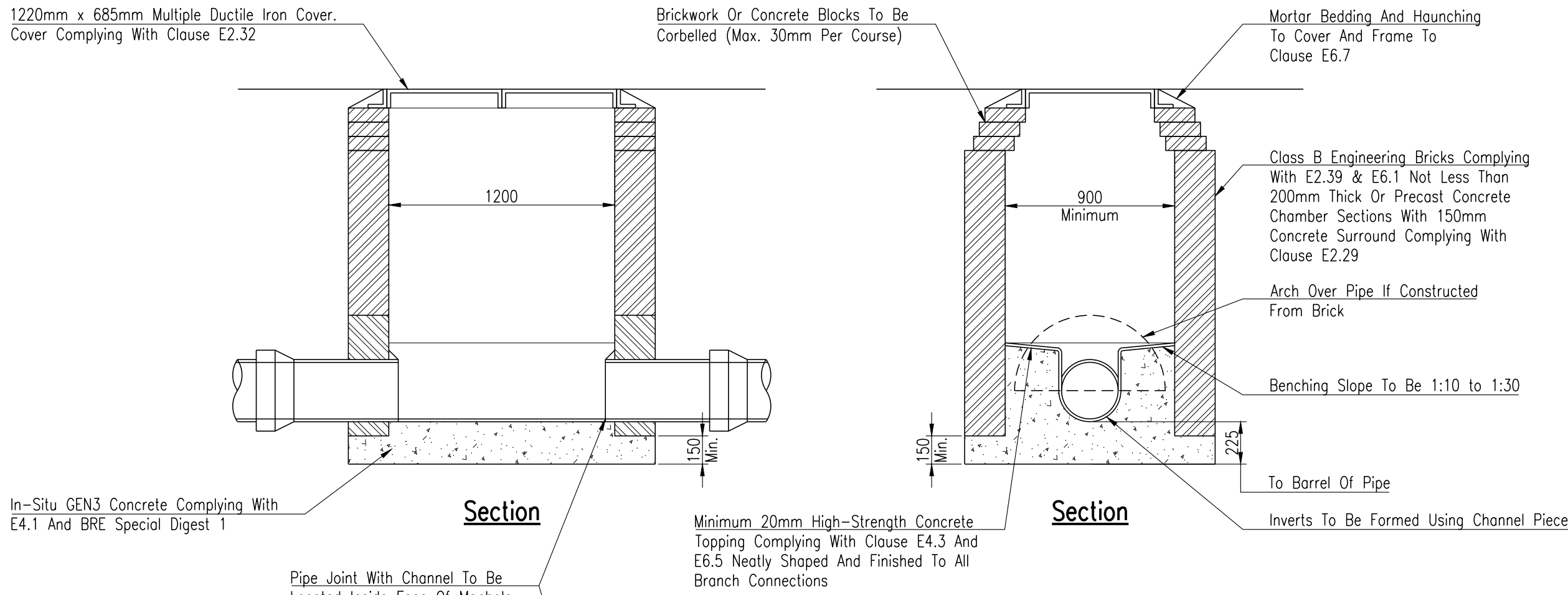
TYPE C PRE-CAST MANHOLE DETAIL

Depth To Pipe Soffit Less Than 1.5m
Scale 1:25

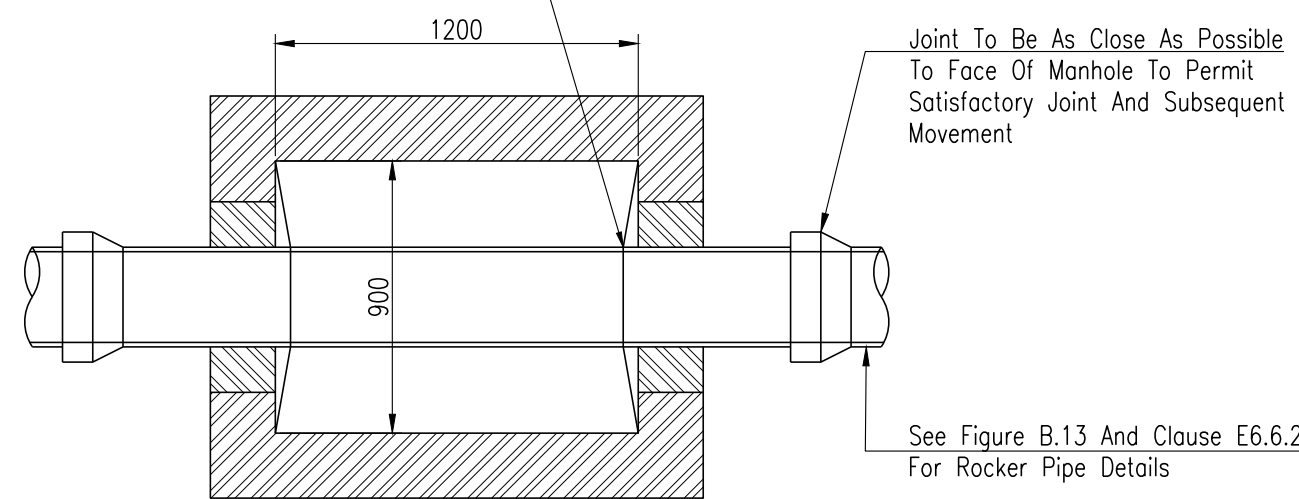


TYPE D INSPECTION CHAMBER DETAIL WITHIN FILTER DRAINS

Max. Depth To Pipe Soffit 2.0m
Scale 1:25



Section



Plan

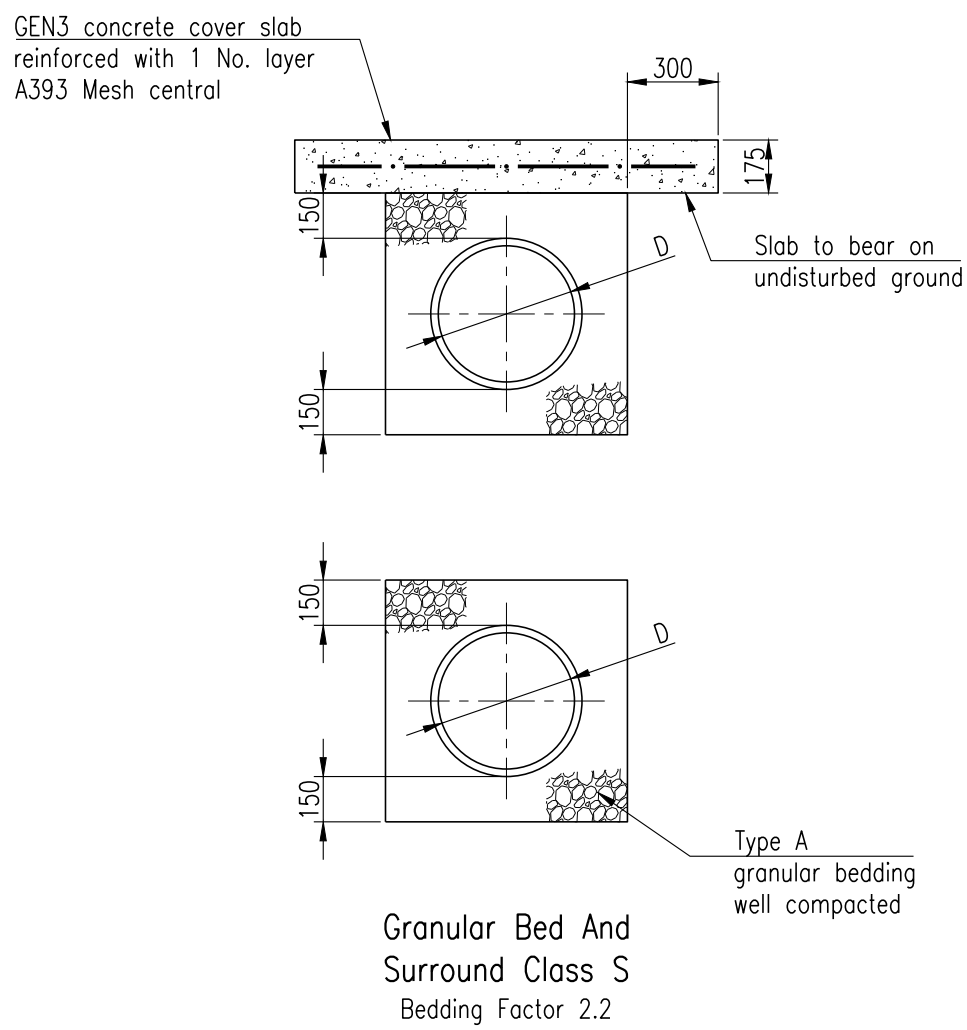
All manhole covers and frames within roadways are to be ductile iron Class D400 complying with BS EN 124: 1994 and badged 'FW' or 'SW' as appropriate. Anglian Water covers also to be badged with the Anglian Water logo.

TYPE C BRICKWORK MANHOLE DETAIL

Depth To Pipe Soffit Less Than 1.5m
Scale 1:25

NOTE: The Use Of Pre-Cast Concrete Chamber Units To E2.29 With 150mm GEN3 In-Situ Concrete Complying With E4.1 And BRE Special Digest 1 In Place Of Brickwork Construction Is Permitted

FOR ADDITIONAL DRAINAGE DETAILS PLEASE REFER TO DRAWING 11221/23



- Notes:
- Class 'S' granular bed and surround preferred with the addition of a reinforced concrete protection slab where the depth of cover beneath the highway is less than 1.2m or less than 0.9m in non trafficked areas.
 - See WIS 4-08-02 for bedding material specification.
 - Refer to IGN 4-11-02 for trenching width details.

Bedding Details For Concrete & Clayware Pipes

Scale 1:25

- The specification in all respects shall be in accordance with the Lincolnshire County Council Development Road and Sustainable Drainage Specification and Construction.
- Within the catchment of traditional drainage design, the minimum longitudinal fall for highways, without channel blocks shall be 1 in 150, and with channel blocks 1 in 250.
- See Clause 10.1 of the Development road and Sustainable Drainage Specification and Construction. In addition, ensure that the first section of any side road falls away from the road to which it is connecting, if general topography requires it to rise, this change of direction should take place after the first set of gullies. This is to ensure a 'false channel' with associated drainage problems is not created in the beltmouth of junctions.
- General deterioration of the existing highway/footway/verges created through construction of the new Section 38 Development will be reinstated to the current Development Road and Sustainable Drainage Specification and Construction at the developers' own cost at the agreement of the inspecting Development Management Officer.
- No Private surface water shall discharge onto the adoptable highway.
- No private, structural features shall overhang the adoptable highway.
- No private retaining walls exceeding 1.37m shall be within 3.66m of the highway boundary.

CDM (Construction Design and Management Regulations 2015):

- If you do not fully understand the risks involved during the construction of the items indicated on this drawing ask your manager, health & safety advisor or a member of the design team before proceeding.
- Existing services may exist on-site. The contractor shall liaise with all relevant service companies and arrange for all services to be located, marked and protected.
- Drainage works may involve deep excavations and/or heavy plant/materials.
- The contractor shall read and understand the Ground Investigation Report and be aware of and potential variations in soil conditions over the site.
- The potential for danger to the general public and site personnel exists from works in the public highway. The contractor shall liaise with the highway authority (Lincolnshire County Council) and ensure safe method of working is maintained at all times.
- Existing drainage pipes may be asbestos cement or fibre reinforced pipes, or concrete pipes containing asbestos fibre. Contractor to ensure competent staff adequately trained are engaged in the works, and disposal of any affected material is undertaken in line with current legislation and good practice guidelines.
- The contractor is to be aware that overhead cables may cross the site.
- The contractor is to be aware that works may involve working adjacent to or in existing watercourses.
- Works may involve working in close proximity to an existing water main. The contractor is to ensure that this is fully located and protected during the works.

Rev	Date	Remarks
A	11.02.22	Drawing Updated To Suit LCC & AWS Comments.
Status		
FOR INFORMATION		
SRC SIDEBOTTOM RICHARDSON CHENG LTD CONSULTING STRUCTURAL AND CIVIL ENGINEERS 15 High Street, Spalding, Lincs. PE11 1TW Tel: 01775 712660 Fax: 01775 712635 Email: src@srcdco.com		
Project		
Residential Development off South Street, Swineshead, Boston, Lincs. For SL Developments		
Title		
Section 104 Proposed Drainage Details (Sheet 1 of 2)		
Date	Nov: '21	Scale
Drawn	MP	Checked
Design	SRC	File Name
DRG No. 11221/22		Rev
		A